

Datasheet for ABIN7234002

anti-Cyclin L2 antibody**2** Images[Go to Product page](#)

Overview

Quantity:	200 µL
Target:	Cyclin L2 (CCNL2)
Reactivity:	Human
Host:	Rabbit
Clonality:	Polyclonal
Application:	Immunohistochemistry (IHC)

Product Details

Immunogen:	Recombinant Human Cyclin-L2 protien
Isotype:	IgG
Characteristics:	Polyclonal Antibody
Purification:	Affinity purification

Target Details

Target:	Cyclin L2 (CCNL2)
Alternative Name:	CCNL2 (CCNL2 Products)
Background:	<p>The protein encoded by this gene belongs to the cyclin family. Through its interaction with several proteins, such as RNA polymerase II, splicing factors, and cyclin-dependent kinases, this protein functions as a regulator of the pre-mRNA splicing process, as well as in inducing apoptosis by modulating the expression of apoptotic and antiapoptotic proteins. Alternatively spliced transcript variants encoding different isoforms have been described for this gene.</p>

Target Details

UniProt: [Q96S94](#)

Application Details

Application Notes: IHC 1:50-1:200

Restrictions: For Research Use only

Handling

Format: Liquid

Concentration: 2 mg/mL

Buffer: PBS with 0.05 % Proclin300 and 50 % glycerol, pH 7.4.

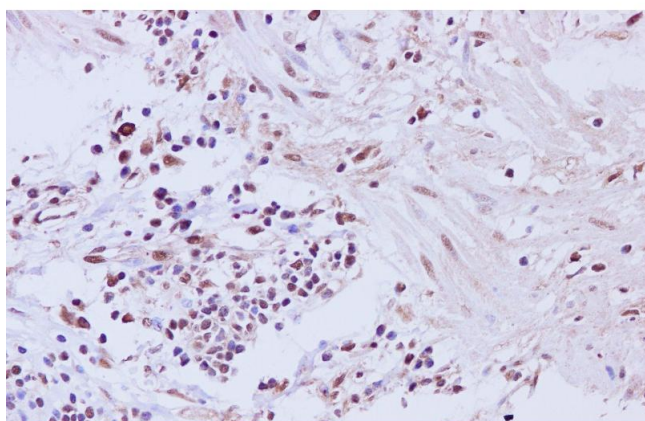
Preservative: ProClin

Precaution of Use: This product contains ProClin: a POISONOUS AND HAZARDOUS SUBSTANCE which should be handled by trained staff only.

Storage: -20 °C

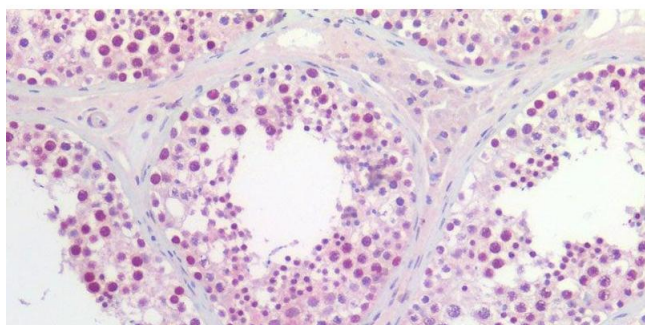
Storage Comment: Store at -20°C. Avoid freeze / thaw cycles.

Images



Immunohistochemistry (Paraffin-embedded Sections)

Image 1. Immunohistochemistry of paraffin-embedded Human muscularis mucosa of the colon tissue using CCNL2 Polyclonal Antibody at dilution of 1:200



Immunohistochemistry (Paraffin-embedded Sections)

Image 2. Immunohistochemistry of paraffin-embedded Human testis using CCNL2 Polyclonal Antibody at dilution of 1:200.