

Datasheet for ABIN7234033
anti-Lamin B1 antibody

8 Images

[Go to Product page](#)

Overview

Quantity:	200 µL
Target:	Lamin B1 (LMNB1)
Reactivity:	Human, Mouse, Rat
Host:	Rabbit
Clonality:	Polyclonal
Conjugate:	This Lamin B1 antibody is un-conjugated
Application:	Western Blotting (WB), Immunohistochemistry (IHC), Immunofluorescence (IF)

Product Details

Immunogen:	Recombinant Rat Lamin-B1 protein
Isotype:	IgG
Characteristics:	Polyclonal Antibody
Purification:	Antigen Affinity Purification

Target Details

Target:	Lamin B1 (LMNB1)
Alternative Name:	Lamin B1 (LMNB1 Products)
Background:	The nuclear lamina consists of a two-dimensional matrix of proteins located next to the inner nuclear membrane. The lamin family of proteins make up the matrix and are highly conserved in evolution. During mitosis, the lamina matrix is reversibly disassembled as the lamin proteins are phosphorylated. Lamin proteins are thought to be involved in nuclear stability, chromatin

Target Details

structure and gene expression. Vertebrate lamins consist of two types, A and B. This gene encodes one of the two B type proteins, B1. Alternative splicing results in transcript variants and a duplication of this gene is associated with autosomal dominant adult-onset leukodystrophy (ADLD).

Molecular Weight: Observed_MW: 72 kDa
Calculated_MW: 67 kDa

UniProt: [P70615](#)

Pathways: [Apoptosis, Caspase Cascade in Apoptosis](#)

Application Details

Application Notes: WB 1:1000-1:2000 IHC 1:100-1:200

Restrictions: For Research Use only

Handling

Format: Liquid

Concentration: 1 mg/mL

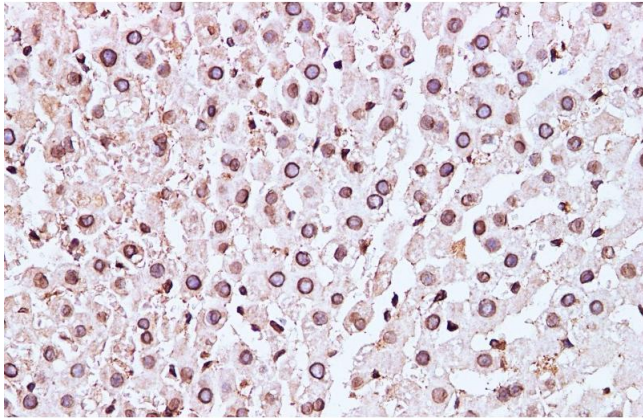
Buffer: PBS with 0.05 % Proclin300 and 50 % glycerol, pH 7.4.

Preservative: ProClin

Precaution of Use: This product contains ProClin: a POISONOUS AND HAZARDOUS SUBSTANCE which should be handled by trained staff only.

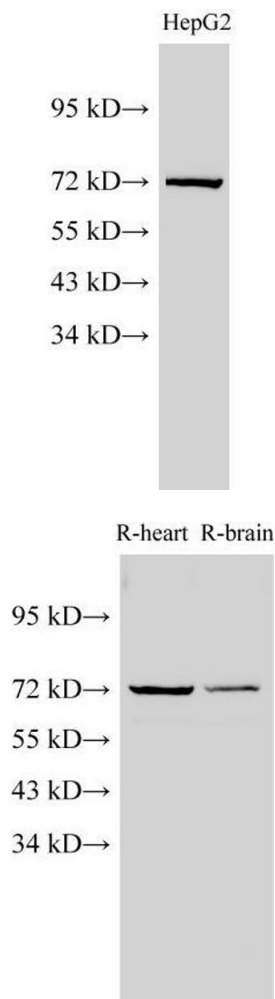
Storage: -20 °C

Storage Comment: Store at -20°C. Avoid freeze / thaw cycles.



Immunohistochemistry (Paraffin-embedded Sections)

Image 1. Immunohistochemistry of paraffin-embedded Mouse liver using Lamin B1 Polyclonal Antibody at dilution of 1:100



Western Blotting

Image 2. Western Blot analysis of HepG2 cell using Lamin B1 Polyclonal Antibody at dilution of 1:1000

Western Blotting

Image 3. Western Blot analysis of Rat heart and Rat brain using Lamin B1 Polyclonal Antibody at dilution of 1:1000

Please check the [product details page](#) for more images. Overall 8 images are available for ABIN7234033.