

Datasheet for ABIN7234072

**anti-GCK antibody****3** Images[Go to Product page](#)

## Overview

Quantity:	200 µL
Target:	GCK
Reactivity:	Human, Mouse
Host:	Rabbit
Clonality:	Polyclonal
Application:	Western Blotting (WB), Immunohistochemistry (IHC), Immunofluorescence (IF)

## Product Details

Immunogen:	Recombinant Mouse Glucokinase protein
Isotype:	IgG
Characteristics:	Polyclonal Antibody
Purification:	Antigen Affinity Purification

## Target Details

Target:	GCK
Alternative Name:	GCK ( <a href="#">GCK Products</a> )
Background:	Hexokinases phosphorylate glucose to produce glucose-6-phosphate, the first step in most glucose metabolism pathways. Alternative splicing of this gene results in three tissue-specific forms of glucokinase, one found in pancreatic islet beta cells and two found in liver. The protein localizes to the outer membrane of mitochondria. In contrast to other forms of hexokinase, this enzyme is not inhibited by its product glucose-6-phosphate but remains active while glucose is

## Target Details

abundant. Mutations in this gene have been associated with non-insulin dependent diabetes mellitus (NIDDM), maturity onset diabetes of the young, type 2 (MODY2) and persistent hyperinsulinemic hypoglycemia of infancy (PHHI).

Molecular Weight: Observed\_MW: 52 kDa  
Calculated\_MW: 52 kDa

UniProt: [P52792](#)

Pathways: [MAPK Signaling](#), [Positive Regulation of Peptide Hormone Secretion](#), [Carbohydrate Homeostasis](#), [Cellular Glucan Metabolic Process](#), [Regulation of Carbohydrate Metabolic Process](#)

## Application Details

Application Notes: WB 1:1000-1:2000 IHC 1:100-1:200 IF 1:100-1:400

Restrictions: For Research Use only

## Handling

Format: Liquid

Concentration: 1 mg/mL

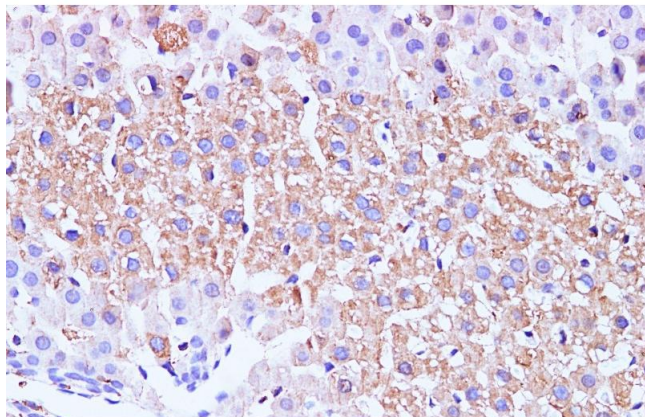
Buffer: PBS with 0.05 % Proclin300 and 50 % glycerol, pH 7.4.

Preservative: ProClin

Precaution of Use: This product contains ProClin: a POISONOUS AND HAZARDOUS SUBSTANCE which should be handled by trained staff only.

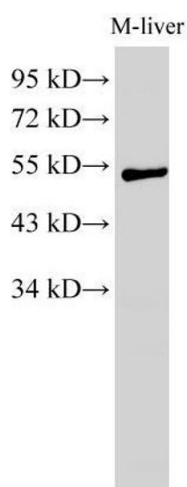
Storage: -20 °C

Storage Comment: Store at -20°C. Avoid freeze / thaw cycles.



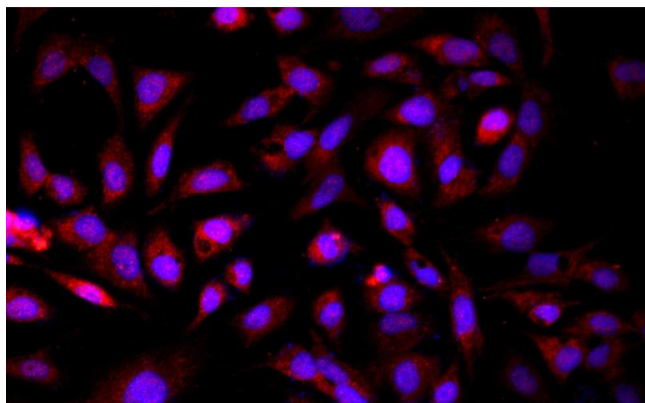
#### Immunohistochemistry (Paraffin-embedded Sections)

**Image 1.** Immunohistochemistry of paraffin-embedded Mouse liver using GCK Polyclonal Antibody at dilution of 1:100



#### Western Blotting

**Image 2.** Western Blot analysis of Mouse liver using GCK Polyclonal Antibody at dilution of 1:1000



#### Immunofluorescence

**Image 3.** Immunofluorescence analysis of HepG2 cells using GCK Polyclonal Antibody at dilution of 1:100