

Datasheet for ABIN7234144

anti-CD147 antibody

4 Images

[Go to Product page](#)

Overview

Quantity:	200 µL
Target:	CD147 (BSG)
Reactivity:	Mouse, Rat
Host:	Rabbit
Clonality:	Polyclonal
Conjugate:	This CD147 antibody is un-conjugated
Application:	Western Blotting (WB), Immunohistochemistry (IHC)

Product Details

Immunogen:	Recombinant Rat Basigin protein
Isotype:	IgG
Characteristics:	Polyclonal Antibody
Purification:	Antigen Affinity Purification

Target Details

Target:	CD147 (BSG)
Alternative Name:	BSG (BSG Products)
Background:	BSG,also named as 5F7,Basigin,EMMPRIN,TCSF and CD147,plays pivotal roles in spermatogenesis,embryo implantation,neural network formation and tumor progression. It stimulates adjacent fibroblasts to produce matrix metalloproteinases (MMPS).CD147 may target monocarboxylate transporters SLC16A1,SLC16A3 and SLC16A8 to plasma membranes

Target Details

of retinal pigment epithelium and neural retina. It seems to be a receptor for oligomannosidic glycans. CD147 is a receptor of CypA, inducing matrix metalloproteinase expression and mediating the degradation of the extracellular matrix, plays an important role in tumorigenesis and invasion in oral cancer. It has been considered as an objective and effective marker to predict invasion and prognosis in various cancers.

Molecular Weight: Observed_MW: 30 kDa, 40-60 kDa
Calculated_MW: 30 kDa, 40-60 kDa

UniProt: [P26453](#)

Pathways: [S100 Proteins](#)

Application Details

Application Notes: WB 1:1000-1:2000 IHC 1:100-1:300

Restrictions: For Research Use only

Handling

Format: Liquid

Concentration: 1 mg/mL

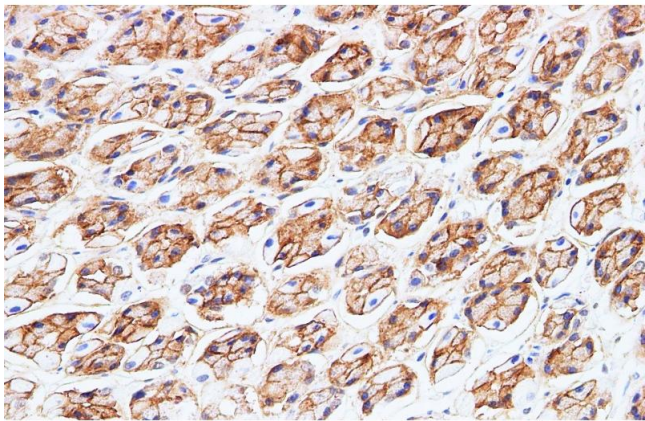
Buffer: PBS with 0.05 % Proclin300 and 50 % glycerol, pH 7.4.

Preservative: ProClin

Precaution of Use: This product contains ProClin: a POISONOUS AND HAZARDOUS SUBSTANCE which should be handled by trained staff only.

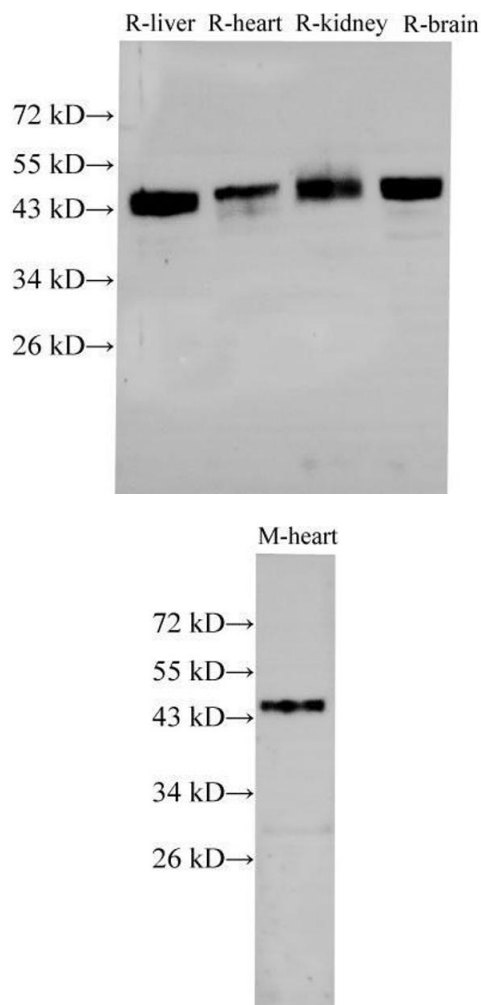
Storage: -20 °C

Storage Comment: Store at -20°C. Avoid freeze / thaw cycles.



Immunohistochemistry (Paraffin-embedded Sections)

Image 1. Immunohistochemistry of paraffin-embedded Rat stomach using BSG Polyclonal Antibody at dilution of 1:200



Western Blotting

Image 2. Western Blot analysis of Rat liver, Rat heart, Rat kidney and Rat brain using BSG Polyclonal Antibody at dilution of 1:2000

Western Blotting

Image 3. Western Blot analysis of Mouse heart using BSG Polyclonal Antibody at dilution of 1:1000

Please check the [product details page](#) for more images. Overall 4 images are available for ABIN7234144.