



## Datasheet for ABIN7234150 anti-EpCAM antibody



[Go to Product page](#)

### 5 Images

#### Overview

Quantity:	200 µL
Target:	EpCAM (EPCAM)
Reactivity:	Human, Mouse, Rat
Host:	Rabbit
Clonality:	Polyclonal
Conjugate:	This EpCAM antibody is un-conjugated
Application:	Western Blotting (WB), Immunohistochemistry (IHC)

#### Product Details

Immunogen:	Recombinant Mouse Epithelial cell adhesion molecule protein
Isotype:	IgG
Characteristics:	Polyclonal Antibody
Purification:	Antigen Affinity Purification

#### Target Details

Target:	EpCAM (EPCAM)
Alternative Name:	EpCAM ( <a href="#">EPCAM Products</a> )
Background:	Epithelial cell adhesion molecule (EpCAM,CD326) is a type I transmembrane glycoprotein that functions as a homophilic,epithelial-specific intercellular cell-adhesion molecule. In addition to cell adhesion,EpCAM is also involved in cellular signaling,cell migration,proliferation,and differentiation. EpCAM is highly expressed on most carcinomas and therefore of potential use

## Target Details

as a diagnostic and prognostic marker for a variety of carcinomas, and has become a therapeutic target.

Molecular Weight: Observed\_MW: 35,40 kDa  
Calculated\_MW: 35,40 kDa

UniProt: [Q99JW5](#)

## Application Details

Application Notes: WB 1:500-1:1000

Restrictions: For Research Use only

## Handling

Format: Liquid

Concentration: 0.025 mg/mL

Buffer: PBS with 0.05 % Proclin300 and 50 % glycerol, pH 7.4.

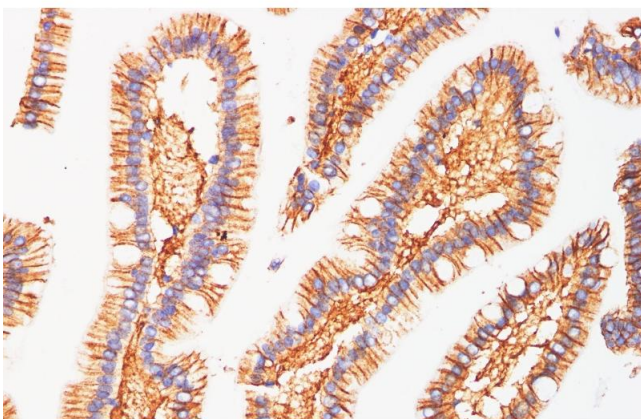
Preservative: ProClin

Precaution of Use: This product contains ProClin: a POISONOUS AND HAZARDOUS SUBSTANCE which should be handled by trained staff only.

Storage: -20 °C

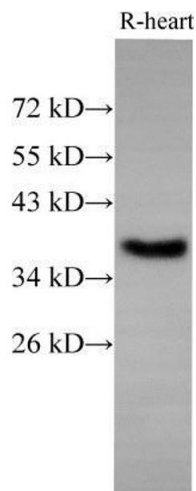
Storage Comment: Store at -20°C. Avoid freeze / thaw cycles.

## Images



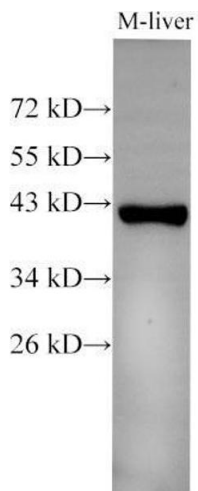
### Immunohistochemistry (Paraffin-embedded Sections)

**Image 1.** Immunohistochemistry of paraffin-embedded Human Duodenum using EpCAM Polyclonal Antibody at dilution of 1:100(400x)



#### Western Blotting

**Image 2.** Western Blot analysis of Rat Heart using EpCAM Polyclonal Antibody at dilution of 1:500



#### Western Blotting

**Image 3.** Western Blot analysis of Mouse liver using EpCAM Polyclonal Antibody at dilution of 1:500

Please check the [product details page](#) for more images. Overall 5 images are available for ABIN7234150.