



[Go to Product page](#)

Datasheet for ABIN7234279  
**anti-IL-6 Receptor antibody**

5 Images

### Overview

Quantity:	200 µL
Target:	IL-6 Receptor (IL6R)
Reactivity:	Human, Rat, Mouse
Host:	Rabbit
Clonality:	Polyclonal
Conjugate:	This IL-6 Receptor antibody is un-conjugated
Application:	Western Blotting (WB), Immunohistochemistry (IHC)

### Product Details

Immunogen:	Recombinant Human Interleukin-6 receptor subunit alpha protein
Isotype:	IgG
Characteristics:	Polyclonal Antibody
Purification:	Antigen Affinity Purification

### Target Details

Target:	IL-6 Receptor (IL6R)
Alternative Name:	IL6R ( <a href="#">IL6R Products</a> )
Background:	This gene encodes a subunit of the interleukin 6 (IL6) receptor complex. Interleukin 6 is a potent pleiotropic cytokine that regulates cell growth and differentiation and plays an important role in the immune response. The IL6 receptor is a protein complex consisting of this protein and interleukin 6 signal transducer (IL6ST/GP130/IL6-beta), a receptor subunit also shared by many

## Target Details

---

other cytokines. Dysregulated production of IL6 and this receptor are implicated in the pathogenesis of many diseases, such as multiple myeloma, autoimmune diseases and prostate cancer. Alternatively spliced transcript variants encoding distinct isoforms have been reported. A pseudogene of this gene is found on chromosome 9.

Molecular Weight: Observed\_MW: 80 kDa  
Calculated\_MW: 40,51 kDa

UniProt: [P08887](#)

Pathways: [JAK-STAT Signaling](#), [Autophagy](#), [Growth Factor Binding](#), [Cancer Immune Checkpoints](#)

## Application Details

---

Application Notes: WB 1:1000-1:2000 IHC 1:100-1:300

Restrictions: For Research Use only

## Handling

---

Format: Liquid

Concentration: 1 mg/mL

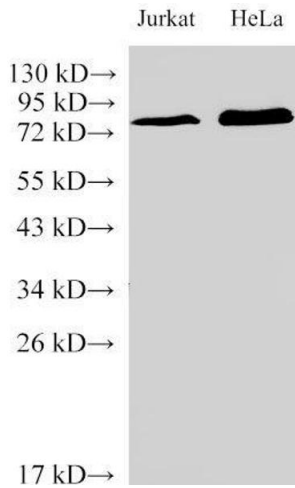
Buffer: PBS with 0.05 % Proclin300 and 50 % glycerol, pH 7.4.

Preservative: ProClin

Precaution of Use: This product contains ProClin: a POISONOUS AND HAZARDOUS SUBSTANCE which should be handled by trained staff only.

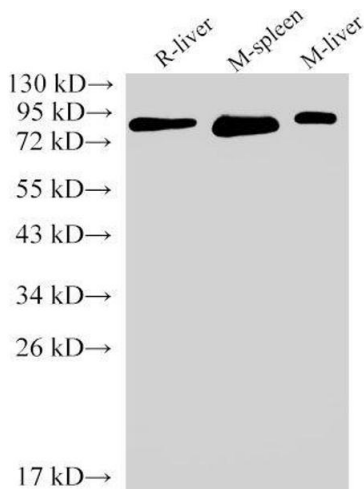
Storage: -20 °C

Storage Comment: Store at -20°C. Avoid freeze / thaw cycles.



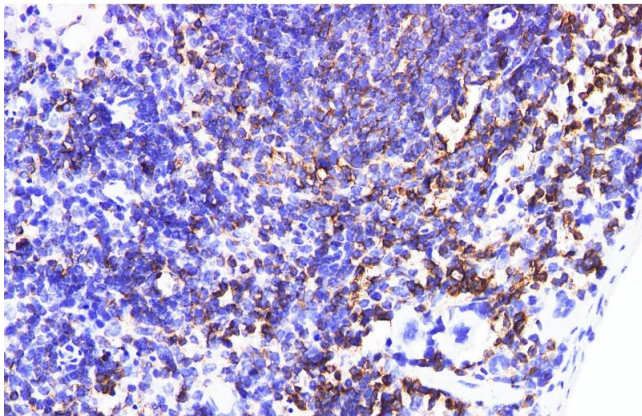
### Western Blotting

**Image 1.** Western Blot analysis of Jurkat and HeLa Cells using IL6R Polyclonal Antibody at dilution of 1:2000



### Western Blotting

**Image 2.** Western Blot analysis of Rat liver, Mouse spleen and Mouse liver using IL6R Polyclonal Antibody at dilution of 1:2000



### Immunohistochemistry (Paraffin-embedded Sections)

**Image 3.** Immunohistochemistry of paraffin-embedded Mouse spleen using IL6R Polyclonal Antibody at dilution of 1:200

Please check the [product details page](#) for more images. Overall 5 images are available for ABIN7234279.