

Datasheet for ABIN7234282

anti-S100A11 antibody

4 Images

[Go to Product page](#)

Overview

Quantity:	200 µL
Target:	S100A11
Reactivity:	Human, Mouse
Host:	Rabbit
Clonality:	Polyclonal
Conjugate:	This S100A11 antibody is un-conjugated
Application:	Immunohistochemistry (IHC)

Product Details

Immunogen:	Recombinant Human S100-A11 protein
Isotype:	IgG
Characteristics:	Polyclonal Antibody
Purification:	Antigen Affinity Purification

Target Details

Target:	S100A11
Alternative Name:	S100A11 (S100A11 Products)
Background:	S100A11,also named as MLN 70,Calgizzarin and S100C,Belongs to the S-100 family. It facilitates the differentiation and the cornification of keratinocytes. The naming of S100A11 systematically arises from its membership of the S100 protein family,named after their solubility in 100 % saturated ammonium sulfate solution. First discovered in 1989,S100A11 has

Target Details

since been proposed to have direct biological functions in an assortment of physiological processes such as endo- and exocytosis, regulation of enzyme activity, cell growth and regulation, apoptosis and inflammation.

UniProt: [P31949](#)

Pathways: [S100 Proteins](#)

Application Details

Application Notes: IHC 1:100-1:400

Restrictions: For Research Use only

Handling

Format: Liquid

Concentration: 1 mg/mL

Buffer: PBS with 0.05 % Proclin300 and 50 % glycerol, pH 7.4.

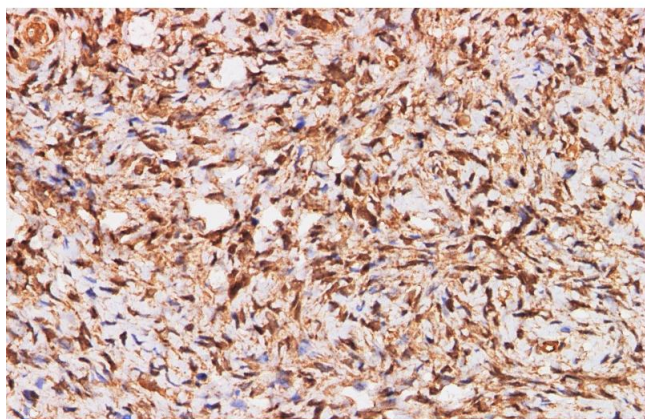
Preservative: ProClin

Precaution of Use: This product contains ProClin: a POISONOUS AND HAZARDOUS SUBSTANCE which should be handled by trained staff only.

Storage: -20 °C

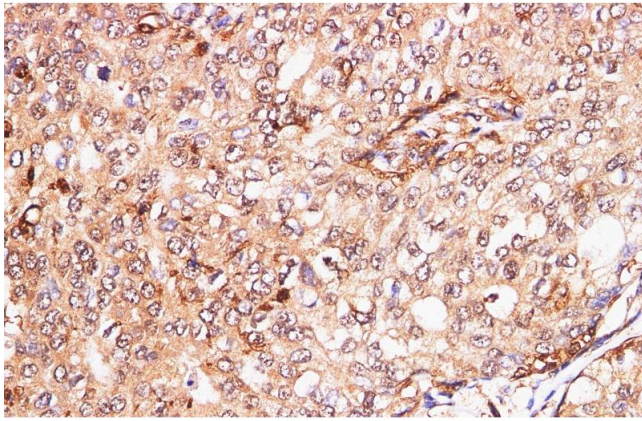
Storage Comment: Store at -20°C. Avoid freeze / thaw cycles.

Images



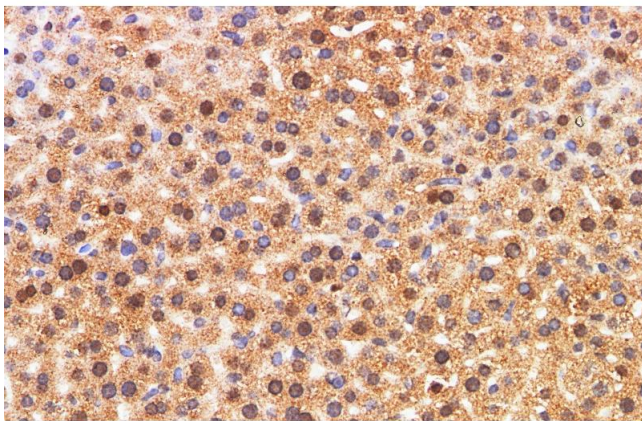
Immunohistochemistry (Paraffin-embedded Sections)

Image 1. Immunohistochemistry of paraffin-embedded Human ovary using S100A11 Polyclonal Antibody at dilution of 1:200



Immunohistochemistry (Paraffin-embedded Sections)

Image 2. Immunohistochemistry of paraffin-embedded Human breast cancer using S100A11 Polyclonal Antibody at dilution of 1:200



Immunohistochemistry (Paraffin-embedded Sections)

Image 3. Immunohistochemistry of paraffin-embedded Mouse liver using S100A11 Polyclonal Antibody at dilution of 1:200

Please check the [product details page](#) for more images. Overall 4 images are available for ABIN7234282.