

Datasheet for ABIN7234297
anti-Galectin 3 antibody

6 Images

[Go to Product page](#)

Overview

Quantity:	200 µL
Target:	Galectin 3 (LGALS3)
Reactivity:	Human, Mouse, Rat
Host:	Rabbit
Clonality:	Polyclonal
Conjugate:	This Galectin 3 antibody is un-conjugated
Application:	Western Blotting (WB), Immunohistochemistry (IHC)

Product Details

Immunogen:	Recombinant Mouse Galectin-3 protein
Isotype:	IgG
Characteristics:	Polyclonal Antibody
Purification:	Antigen Affinity Purification

Target Details

Target:	Galectin 3 (LGALS3)
Alternative Name:	Galectin 3 (LGALS3 Products)
Target Type:	Chemical
Background:	Galectins are a family of animal lectins defined by shared characteristic amino-acid sequences and affinity for β -galactose-containing oligosaccharides. Galectin-3 contains one carbohydrate

Target Details

recognition domain (CRD) and a proline- and glycine-rich N-terminal domain through which is able to form oligomers. Galectin-3 is widely expressed in many normal tissues and a variety of tumors. It is found intracellularly in nucleus and cytoplasm or secreted outside of cell, being present on the cell surface or in the extracellular space. Galectin-3 is involved in various biological processes including cell growth, adhesion, differentiation, apoptosis, angiogenesis, immune response, neoplastic transformation and metastasis.

Molecular Weight: Observed_MW: 27 kDa
Calculated_MW: 27 kDa

Gene ID: 16854

UniProt: [P16110](#)

Pathways: [RTK Signaling](#)

Application Details

Application Notes: WB 1:1000-1:2000 IHC 1:100-1:400

Restrictions: For Research Use only

Handling

Format: Liquid

Concentration: 0.47 mg/mL

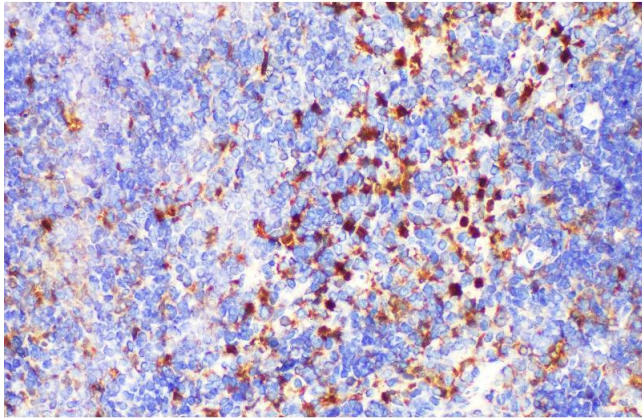
Buffer: PBS with 0.05 % Proclin300, 50 % glycerol, pH 7.3

Preservative: ProClin

Precaution of Use: This product contains ProClin: a POISONOUS AND HAZARDOUS SUBSTANCE which should be handled by trained staff only.

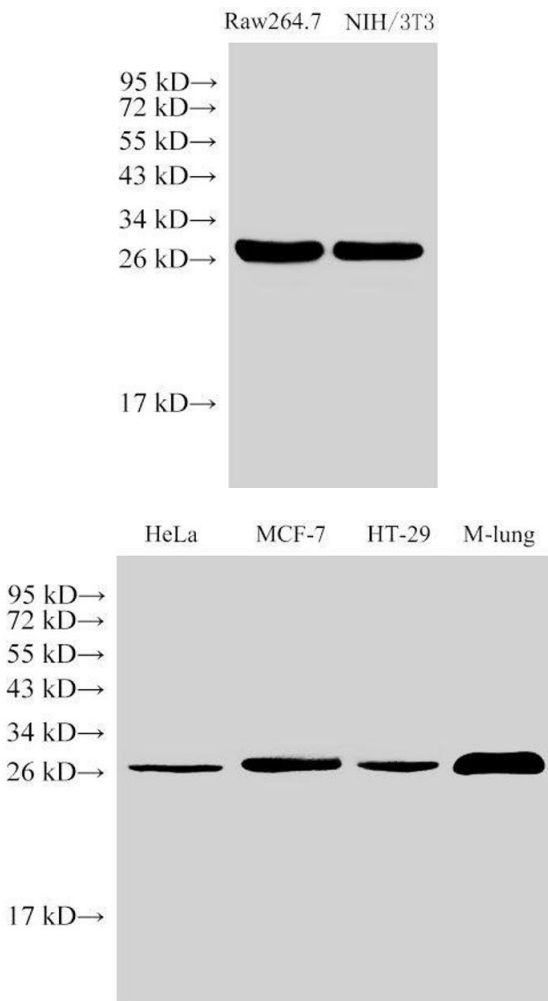
Storage: -20 °C

Storage Comment: Store at -20°C. Avoid freeze / thaw cycles.



Immunohistochemistry (Paraffin-embedded Sections)

Image 1. Immunohistochemistry of paraffin-embedded Mouse spleen using LGALS3 Polyclonal Antibody at dilution of 1:200



Western Blotting

Image 2. Western Blot analysis of 1)Raw264.7, 2)NIH/3T3 using LGALS3 Polyclonal Antibody at dilution of 1:1000

Western Blotting

Image 3. Western Blot analysis of 1)Hela, 2)MCF-7, 3)HT-29, 4)Mouse Lung using LGALS3 Polyclonal Antibody at dilution of 1:1000

Please check the [product details page](#) for more images. Overall 6 images are available for ABIN7234297.