

Datasheet for ABIN7234303
anti-CEACAM1 antibody

3 Images

[Go to Product page](#)

Overview

Quantity:	200 µL
Target:	CEACAM1
Reactivity:	Rat, Mouse
Host:	Rabbit
Clonality:	Polyclonal
Conjugate:	This CEACAM1 antibody is un-conjugated
Application:	Immunohistochemistry (IHC)

Product Details

Immunogen:	Recombinant Mouse Carcinoembryonic antigen-related cell adhesion molecule 1 protein
Isotype:	IgG
Characteristics:	Polyclonal Antibody
Purification:	Antigen Affinity Purification

Target Details

Target:	CEACAM1
Alternative Name:	CEACAM1 (CEACAM1 Products)
Background:	This gene encodes a member of the carcinoembryonic antigen (CEA) gene family, which belongs to the immunoglobulin superfamily. Two subgroups of the CEA family, the CEA cell adhesion molecules and the pregnancy-specific glycoproteins, are located within a 1.2 Mb cluster on the long arm of chromosome 19. Eleven pseudogenes of the CEA cell adhesion

Target Details

molecule subgroup are also found in the cluster. The encoded protein was originally described in bile ducts of liver as biliary glycoprotein. Subsequently, it was found to be a cell-cell adhesion molecule detected on leukocytes, epithelia, and endothelia. The encoded protein mediates cell adhesion via homophilic as well as heterophilic binding to other proteins of the subgroup.

Gene ID: 26365

UniProt: [P31809](#)

Application Details

Application Notes: IHC 1:100-1:300

Restrictions: For Research Use only

Handling

Format: Liquid

Concentration: 1 mg/mL

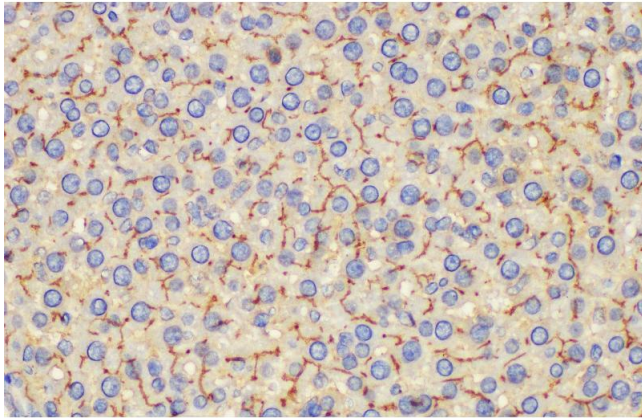
Buffer: PBS with 0.05 % Proclin300, 50 % glycerol, pH 7.3

Preservative: ProClin

Precaution of Use: This product contains ProClin: a POISONOUS AND HAZARDOUS SUBSTANCE which should be handled by trained staff only.

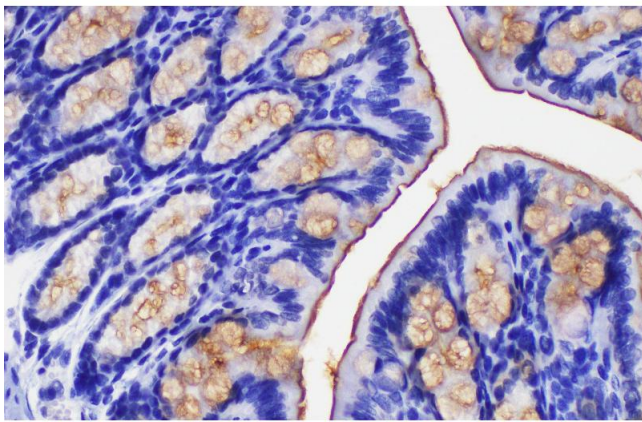
Storage: -20 °C

Storage Comment: Store at -20°C. Avoid freeze / thaw cycles.



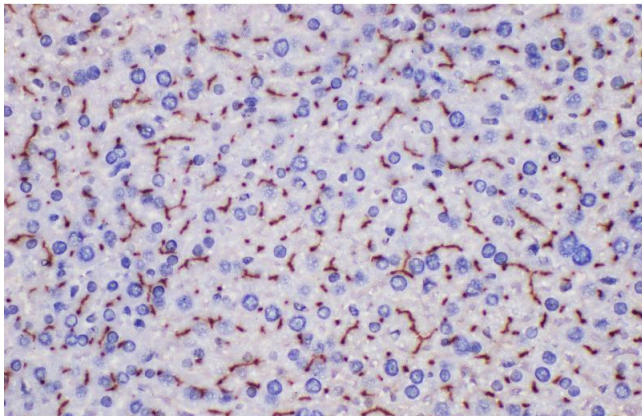
Immunohistochemistry (Paraffin-embedded Sections)

Image 1. Immunohistochemistry of paraffin-embedded Rat liver using Ceacam1 Polyclonal Antibody at dilution of 1:200



Immunohistochemistry (Paraffin-embedded Sections)

Image 2. Immunohistochemistry of paraffin-embedded Mouse colon using Ceacam1 Polyclonal Antibody at dilution of 1:200



Immunohistochemistry (Paraffin-embedded Sections)

Image 3. Immunohistochemistry of paraffin-embedded Mouse liver using Ceacam1 Polyclonal Antibody at dilution of 1:200