

Datasheet for ABIN7234306
anti-CEACAM1 antibody



[Go to Product page](#)

2 Images

Overview

Quantity:	200 µL
Target:	CEACAM1
Reactivity:	Rat
Host:	Rabbit
Clonality:	Polyclonal
Conjugate:	This CEACAM1 antibody is un-conjugated
Application:	Western Blotting (WB), Immunohistochemistry (IHC)

Product Details

Immunogen:	Recombinant Rat Carcinoembryonic antigen-related cell adhesion molecule 1 protein
Isotype:	IgG
Characteristics:	Polyclonal Antibody
Purification:	Antigen Affinity Purification

Target Details

Target:	CEACAM1
Alternative Name:	CEACAM1 (CEACAM1 Products)
Background:	This gene encodes a member of the carcinoembryonic antigen (CEA) gene family, which belongs to the immunoglobulin superfamily. Two subgroups of the CEA family, the CEA cell adhesion molecules and the pregnancy-specific glycoproteins, are located within a 1.2 Mb cluster on the long arm of chromosome 19. Eleven pseudogenes of the CEA cell adhesion

Target Details

molecule subgroup are also found in the cluster. The encoded protein was originally described in bile ducts of liver as biliary glycoprotein. Subsequently, it was found to be a cell-cell adhesion molecule detected on leukocytes, epithelia, and endothelia. The encoded protein mediates cell adhesion via homophilic as well as heterophilic binding to other proteins of the subgroup.

Molecular Weight: Observed_MW: 57 kDa
Calculated_MW: 57,50 kDa

Gene ID: 81613

UniProt: [P16573](#)

Application Details

Application Notes: WB 1:500-1:1000 IHC 1:100-1:300

Restrictions: For Research Use only

Handling

Format: Liquid

Concentration: 1 mg/mL

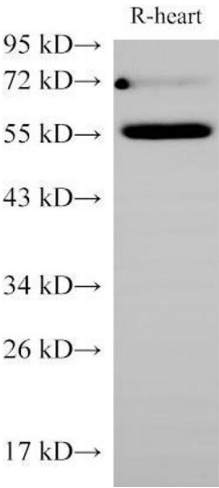
Buffer: PBS with 0.05 % Proclin300, 50 % glycerol, pH 7.3

Preservative: ProClin

Precaution of Use: This product contains ProClin: a POISONOUS AND HAZARDOUS SUBSTANCE which should be handled by trained staff only.

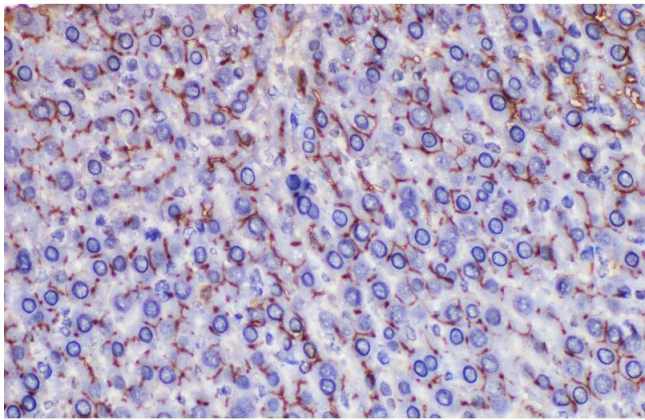
Storage: -20 °C

Storage Comment: Store at -20°C. Avoid freeze / thaw cycles.



Western Blotting

Image 1. Western Blot analysis of Rat Heart using Ceacam1 Polyclonal Antibody at dilution of 1:1000



Immunohistochemistry (Paraffin-embedded Sections)

Image 2. Immunohistochemistry of paraffin-embedded Rat liver using Ceacam1 Polyclonal Antibody at dilution of 1:200