

Datasheet for ABIN7234414
anti-Fibrinogen beta Chain antibody

6 Images

[Go to Product page](#)

Overview

| | |
|--------------|--|
| Quantity: | 200 µL |
| Target: | Fibrinogen beta Chain (FGB) |
| Reactivity: | Human, Rat, Mouse |
| Host: | Rabbit |
| Clonality: | Polyclonal |
| Conjugate: | This Fibrinogen beta Chain antibody is un-conjugated |
| Application: | Western Blotting (WB), Immunohistochemistry (IHC) |

Product Details

| | |
|------------------|---|
| Immunogen: | Recombinant Human Fibrinogen beta chain protein |
| Isotype: | IgG |
| Characteristics: | Polyclonal Antibody |
| Purification: | Antigen Affinity Purification |

Target Details

| | |
|-------------------|--|
| Target: | Fibrinogen beta Chain (FGB) |
| Alternative Name: | FGB (FGB Products) |
| Background: | The protein encoded by this gene is the beta component of fibrinogen, a blood-borne glycoprotein comprised of three pairs of nonidentical polypeptide chains. Following vascular injury, fibrinogen is cleaved by thrombin to form fibrin which is the most abundant component of blood clots. In addition, various cleavage products of fibrinogen and fibrin regulate cell |

Target Details

adhesion and spreading, display vasoconstrictor and chemotactic activities, and are mitogens for several cell types. Mutations in this gene lead to several disorders, including afibrinogenemia, dysfibrinogenemia, hypodysfibrinogenemia and thrombotic tendency.

Molecular Weight: Observed_MW: 55 kDa
Calculated_MW: 55 kDa

Gene ID: 2244

UniProt: [P02675](#)

Application Details

Application Notes: WB 1:2000-1:4000 IHC 1:100-1:300

Restrictions: For Research Use only

Handling

Format: Liquid

Concentration: 1 mg/mL

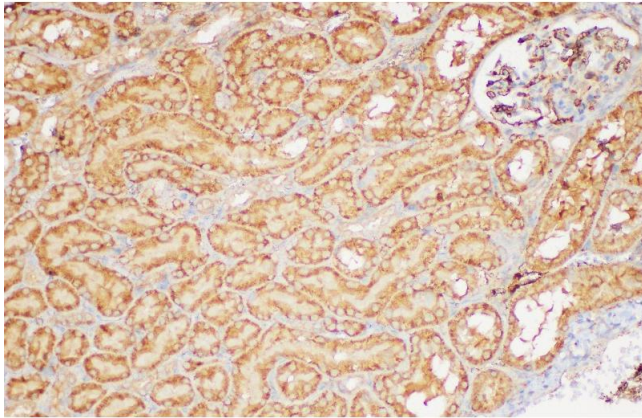
Buffer: PBS with 0.05 % Proclin300, 50 % glycerol, pH 7.3

Preservative: ProClin

Precaution of Use: This product contains ProClin: a POISONOUS AND HAZARDOUS SUBSTANCE which should be handled by trained staff only.

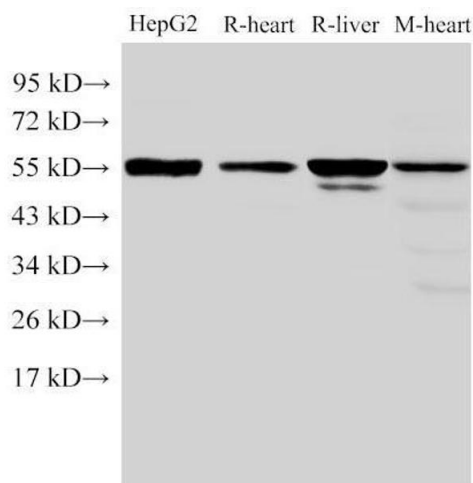
Storage: -20 °C

Storage Comment: Store at -20°C. Avoid freeze / thaw cycles.



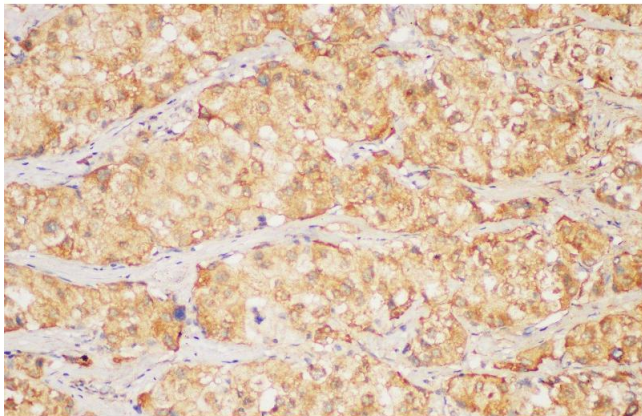
Immunohistochemistry (Paraffin-embedded Sections)

Image 1. Immunohistochemistry of paraffin-embedded Rat kidney using FGB Polyclonal Antibody at dilution of 1:200



Western Blotting

Image 2. Western Blot analysis of HepG2, Rat heart, Rat liver and Mouse heart using FGB Polyclonal Antibody at dilution of 1:4000



Immunohistochemistry (Paraffin-embedded Sections)

Image 3. Immunohistochemistry of paraffin-embedded Human liver cancer using FGB Polyclonal Antibody at dilution of 1:200

Please check the [product details page](#) for more images. Overall 6 images are available for ABIN7234414.