

Datasheet for ABIN7234438

anti-FGG antibody**3** Images[Go to Product page](#)

Overview

Quantity:	200 µL
Target:	FGG
Reactivity:	Human, Mouse, Rat
Host:	Rabbit
Clonality:	Polyclonal
Conjugate:	This FGG antibody is un-conjugated
Application:	Western Blotting (WB), Immunohistochemistry (IHC)

Product Details

Immunogen:	Recombinant Mouse Fibrinogen gamma chain protein
Isotype:	IgG
Characteristics:	Polyclonal Antibody
Purification:	Antigen Affinity Purification

Target Details

Target:	FGG
Alternative Name:	FGG (FGG Products)
Background:	The protein encoded by this gene is the gamma component of fibrinogen, a blood-borne glycoprotein comprised of three pairs of nonidentical polypeptide chains. Following vascular injury, fibrinogen is cleaved by thrombin to form fibrin which is the most abundant component of blood clots. In addition, various cleavage products of fibrinogen and fibrin regulate cell

Target Details

adhesion and spreading, display vasoconstrictor and chemotactic activities, and are mitogens for several cell types. Mutations in this gene lead to several disorders, including dysfibrinogenemia, hypofibrinogenemia and thrombophilia. Alternative splicing results in transcript variants encoding different isoforms.

Molecular Weight: Observed_MW: 49 kDa
Calculated_MW: 49 kDa

Gene ID: 99571

UniProt: [Q8VCM7](#)

Application Details

Application Notes: WB 1:1000-1:3000 IHC 1:100-1:300

Restrictions: For Research Use only

Handling

Format: Liquid

Concentration: 1 mg/mL

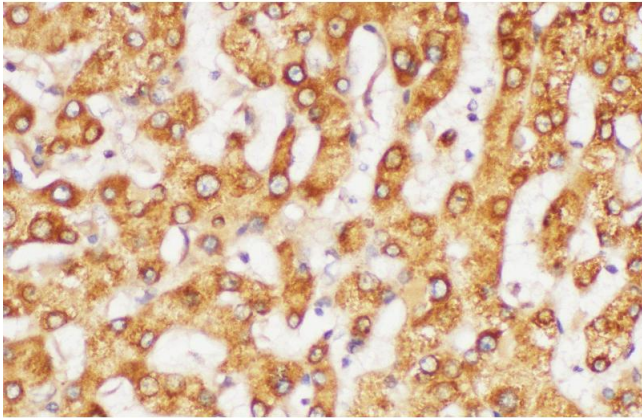
Buffer: PBS with 0.05 % Proclin300, 50 % glycerol, pH 7.3

Preservative: ProClin

Precaution of Use: This product contains ProClin: a POISONOUS AND HAZARDOUS SUBSTANCE which should be handled by trained staff only.

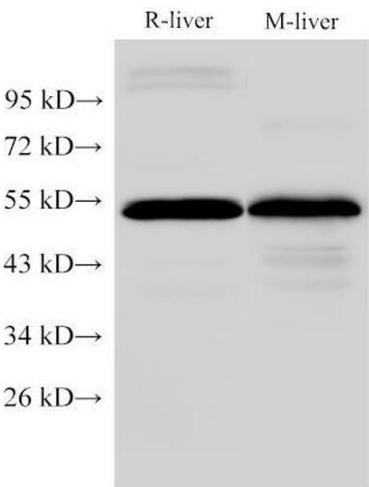
Storage: -20 °C

Storage Comment: Store at -20°C. Avoid freeze / thaw cycles.



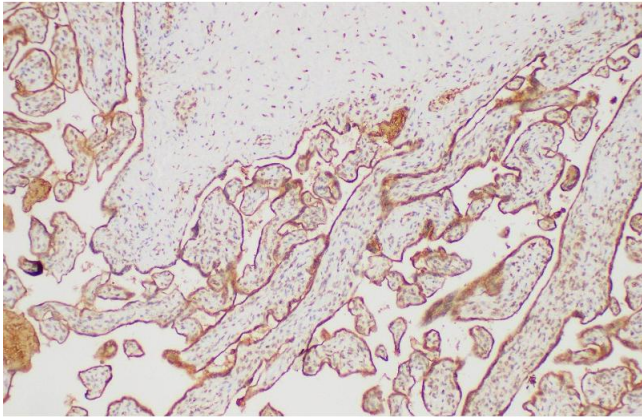
Immunohistochemistry (Paraffin-embedded Sections)

Image 1. Immunohistochemistry of paraffin-embedded Human liver using FGG Polyclonal Antibody at dilution of 1:200



Western Blotting

Image 2. Western Blot analysis of Rat liver and Mouse liver using FGG Polyclonal Antibody at dilution of 1:2000



Immunohistochemistry (Paraffin-embedded Sections)

Image 3. Immunohistochemistry of paraffin-embedded Human placenta using FGG Polyclonal Antibody at dilution of 1:200