



[Go to Product page](#)

Datasheet for ABIN7234447
anti-S100A6 antibody

5 Images

Overview

Quantity:	200 µL
Target:	S100A6
Reactivity:	Human, Mouse, Rat
Host:	Rabbit
Clonality:	Polyclonal
Conjugate:	This S100A6 antibody is un-conjugated
Application:	Western Blotting (WB), Immunohistochemistry (IHC)

Product Details

Immunogen:	Recombinant Human Protein S100-A6 protein
Isotype:	IgG
Characteristics:	Polyclonal Antibody
Purification:	Antigen Affinity Purification

Target Details

Target:	S100A6
Alternative Name:	S100A6 (S100A6 Products)
Background:	The protein encoded by this gene is a member of the S100 family of proteins containing 2 EF-hand calcium-binding motifs. S100 proteins are localized in the cytoplasm and/or nucleus of a wide range of cells, and involved in the regulation of a number of cellular processes such as cell cycle progression and differentiation. S100 genes include at least 13 members which are

Target Details

located as a cluster on chromosome 1q21.

Molecular Weight: Observed_MW: 10 kDa
Calculated_MW: 10 kDa

Gene ID: 6277

UniProt: [P06703](#)

Pathways: [S100 Proteins](#)

Application Details

Application Notes: WB 1:1000-1:3000 IHC 1:50-1:200

Restrictions: For Research Use only

Handling

Format: Liquid

Concentration: 0.45 mg/mL

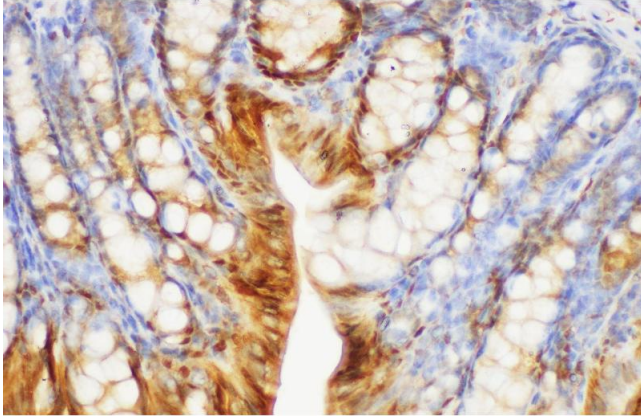
Buffer: PBS with 0.05 % Proclin300, 50 % glycerol, pH 7.3

Preservative: ProClin

Precaution of Use: This product contains ProClin: a POISONOUS AND HAZARDOUS SUBSTANCE which should be handled by trained staff only.

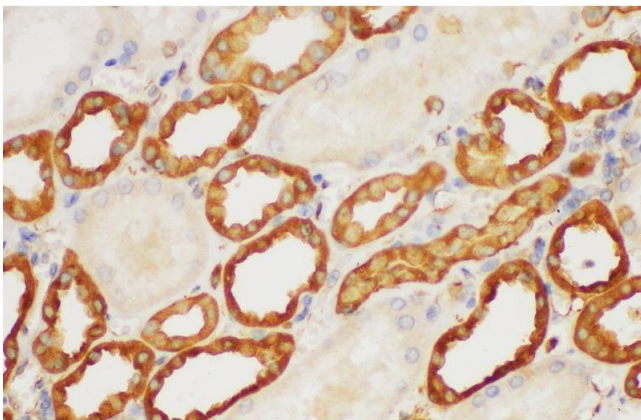
Storage: -20 °C

Storage Comment: Store at -20°C. Avoid freeze / thaw cycles.



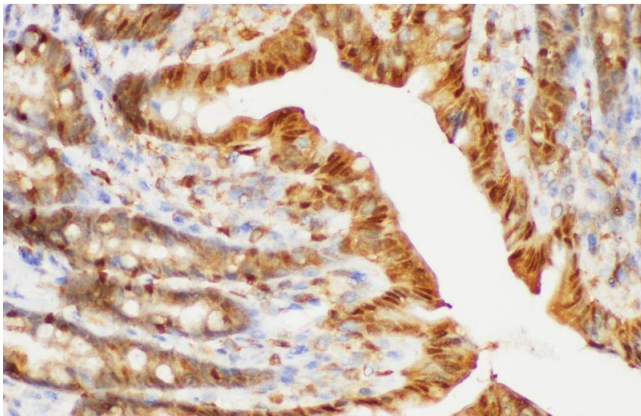
Immunohistochemistry (Paraffin-embedded Sections)

Image 1. Immunohistochemistry of paraffin-embedded Mouse colon using S100A6 Polyclonal Antibody at dilution of 1:150



Immunohistochemistry (Paraffin-embedded Sections)

Image 2. Immunohistochemistry of paraffin-embedded Human kidney using S100A6 Polyclonal Antibody at dilution of 1:150



Immunohistochemistry (Paraffin-embedded Sections)

Image 3. Immunohistochemistry of paraffin-embedded Rat colon using S100A6 Polyclonal Antibody at dilution of 1:150

Please check the [product details page](#) for more images. Overall 5 images are available for ABIN7234447.