

Datasheet for ABIN7234582

anti-RAGE antibody**3** Images[Go to Product page](#)

Overview

Quantity:	200 µL
Target:	RAGE (AGER)
Reactivity:	Human
Host:	Rabbit
Clonality:	Polyclonal
Conjugate:	This RAGE antibody is un-conjugated
Application:	Western Blotting (WB), Immunohistochemistry (IHC), ELISA

Product Details

Immunogen:	Recombinant protein of human AGER
Isotype:	IgG
Characteristics:	Polyclonal Antibody
Purification:	Affinity purification

Target Details

Target:	RAGE (AGER)
Alternative Name:	RAGE (AGER Products)
Background:	The advanced glycosylation end product (AGE) receptor encoded by this gene is a member of the immunoglobulin superfamily of cell surface receptors. It is a multiligand receptor, and besides AGE, interacts with other molecules implicated in homeostasis, development, and inflammation, and certain diseases, such as diabetes and Alzheimer's disease. Many

Target Details

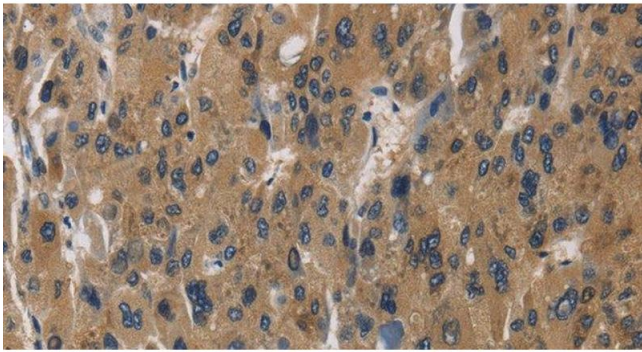
	alternatively spliced transcript variants encoding different isoforms, as well as non-protein-coding variants, have been described for this gene.
Molecular Weight:	43 kDa
UniProt:	Q15109
Pathways:	Carbohydrate Homeostasis , Toll-Like Receptors Cascades , Smooth Muscle Cell Migration , S100 Proteins

Application Details

Application Notes:	WB 1:500-1:2000, IHC 1:100-1:300
Restrictions:	For Research Use only

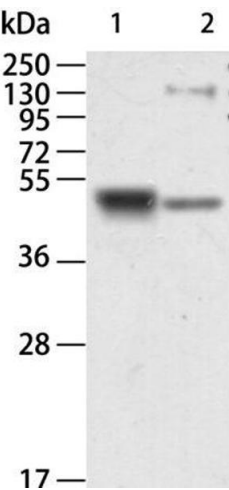
Handling

Format:	Liquid
Concentration:	1.3 mg/mL
Buffer:	PBS with 0.05 % sodium azide and 50 % glycerol, PH7.4
Preservative:	Sodium azide
Precaution of Use:	This product contains Sodium azide: a POISONOUS AND HAZARDOUS SUBSTANCE which should be handled by trained staff only.
Storage:	-20 °C
Storage Comment:	Store at -20°C. Avoid freeze / thaw cycles.



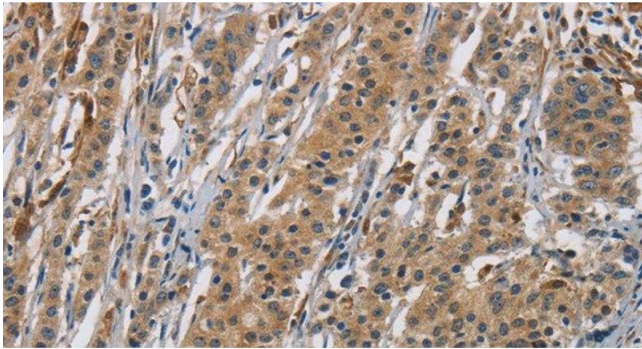
Immunohistochemistry (Paraffin-embedded Sections)

Image 1. Immunohistochemistry of paraffin-embedded Human liver cancer using RAGE Polyclonal Antibody at dilution of 1:70



Western Blotting

Image 2. Western Blot analysis of Human kidney and Mouse brain tissue using RAGE Polyclonal Antibody at dilution of 1:750



Immunohistochemistry (Paraffin-embedded Sections)

Image 3. Immunohistochemistry of paraffin-embedded Human gastric cancer using RAGE Polyclonal Antibody at dilution of 1:70