

Datasheet for ABIN7234733

**anti-ABCB8 antibody**[Go to Product page](#)**1** Image

## Overview

Quantity:	200 µL
Target:	ABCB8
Reactivity:	Human, Mouse, Rat
Host:	Rabbit
Clonality:	Polyclonal
Conjugate:	This ABCB8 antibody is un-conjugated
Application:	Western Blotting (WB), ELISA

## Product Details

Immunogen:	Recombinant protein of human ABCB8
Isotype:	IgG
Characteristics:	Polyclonal Antibody
Purification:	Affinity purification

## Target Details

Target:	ABCB8
Alternative Name:	ABCB8 ( <a href="#">ABCB8 Products</a> )
Background:	The membrane-associated protein encoded by this gene is a member of the superfamily of ATP-binding cassette (ABC) transporters. ABC proteins transport various molecules across extra- and intra-cellular membranes. ABC genes are divided into seven distinct subfamilies (ABC1, MDR/TAP, MRP, ALD, OABP, GCN20, White). This protein is a member of the MDR/TAP

## Target Details

subfamily. Members of the MDR/TAP subfamily are involved in multidrug resistance as well as antigen presentation. The function of this half-transporter has not yet been determined, however, it may involve the compartmentalization and transport of heme, as well as peptides, from the mitochondria to the nucleus and cytosol. This protein may also play a role in the transport of phospholipids into mitochondrial membranes.

Molecular Weight: 80 kDa

UniProt: [Q9NUT2](#)

## Application Details

Application Notes: WB 1:500-1:2000

Restrictions: For Research Use only

## Handling

Format: Liquid

Concentration: 1.2 mg/mL

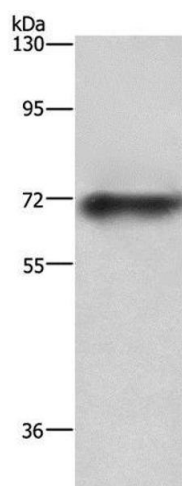
Buffer: PBS with 0.05 % sodium azide and 50 % glycerol, PH7.4

Preservative: Sodium azide

Precaution of Use: This product contains Sodium azide: a POISONOUS AND HAZARDOUS SUBSTANCE which should be handled by trained staff only.

Storage: -20 °C

Storage Comment: Store at -20°C. Avoid freeze / thaw cycles.



#### Western Blotting

**Image 1.** Western Blot analysis of Mouse heart tissue using ABCB8 Polyclonal Antibody at dilution of 1:750