



Datasheet for ABIN7234797 anti-Keratin 31 antibody



[Go to Product page](#)

3 Images

Overview

Quantity:	200 µL
Target:	Keratin 31 (KRT31)
Reactivity:	Human, Mouse
Host:	Rabbit
Clonality:	Polyclonal
Conjugate:	This Keratin 31 antibody is un-conjugated
Application:	Western Blotting (WB), ELISA, Immunohistochemistry (IHC)

Product Details

Immunogen:	Recombinant protein of human KRT31
Isotype:	IgG
Characteristics:	Polyclonal Antibody
Purification:	Affinity purification

Target Details

Target:	Keratin 31 (KRT31)
Alternative Name:	KRT31 (KRT31 Products)
Background:	<p>The protein encoded by this gene is a member of the keratin gene family. As a type I hair keratin, it is an acidic protein which heterodimerizes with type II keratins to form hair and nails.</p> <p>The type I hair keratins are clustered in a region of chromosome 17q12-q21 and have the same direction of transcription.</p>

Target Details

Molecular Weight:	47 kDa
UniProt:	Q15323

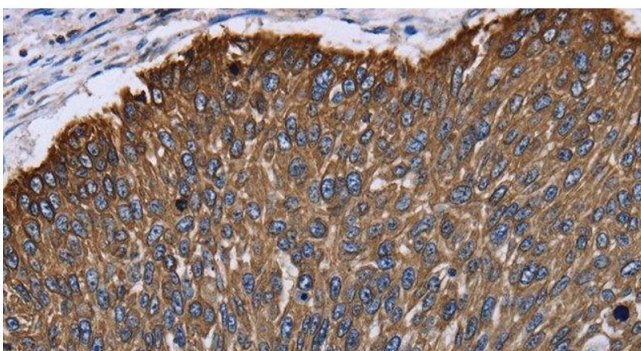
Application Details

Application Notes:	WB 1:500-1:2000, IHC 1:25-1:100
Restrictions:	For Research Use only

Handling

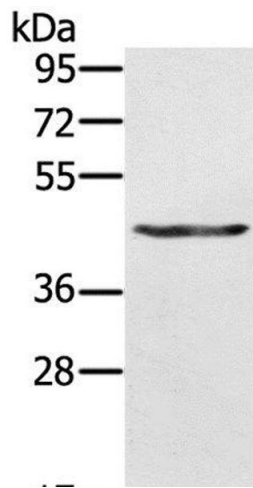
Format:	Liquid
Concentration:	0.5 mg/mL
Buffer:	PBS with 0.05 % sodium azide and 50 % glycerol, PH7.4
Preservative:	Sodium azide
Precaution of Use:	This product contains Sodium azide: a POISONOUS AND HAZARDOUS SUBSTANCE which should be handled by trained staff only.
Storage:	-20 °C
Storage Comment:	Store at -20°C. Avoid freeze / thaw cycles.

Images



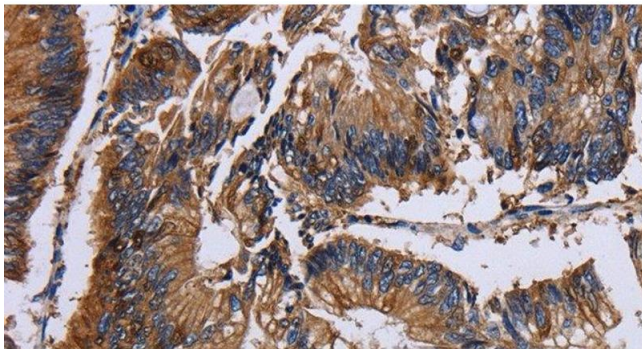
Immunohistochemistry (Paraffin-embedded Sections)

Image 1. Immunohistochemistry of paraffin-embedded Human lung cancer using KRT31 Polyclonal Antibody at dilution of 1:30



Western Blotting

Image 2. Western Blot analysis of A549 cell using KRT31 Polyclonal Antibody at dilution of 1:500



Immunohistochemistry (Paraffin-embedded Sections)

Image 3. Immunohistochemistry of paraffin-embedded Human colon cancer using KRT31 Polyclonal Antibody at dilution of 1:30