

Datasheet for ABIN7234850

anti-CAP2 antibody

3 Images

[Go to Product page](#)

Overview

| | |
|--------------|--|
| Quantity: | 200 µL |
| Target: | CAP2 |
| Reactivity: | Human, Mouse, Rat |
| Host: | Rabbit |
| Clonality: | Polyclonal |
| Conjugate: | This CAP2 antibody is un-conjugated |
| Application: | Western Blotting (WB), Immunohistochemistry (IHC), ELISA |

Product Details

| | |
|------------------|-----------------------------------|
| Immunogen: | Recombinant protein of human CAP2 |
| Isotype: | IgG |
| Characteristics: | Polyclonal Antibody |
| Purification: | Affinity purification |

Target Details

| | |
|-------------------|--|
| Target: | CAP2 |
| Alternative Name: | CAP2 (CAP2 Products) |
| Background: | This gene was identified by its similarity to the gene for human adenylyl cyclase-associated protein. The function of the protein encoded by this gene is unknown. However, the protein appears to be able to interact with adenylyl cyclase-associated protein and actin. |

Target Details

| | |
|-------------------|------------------------|
| Molecular Weight: | 53 kDa |
| UniProt: | P40123 |

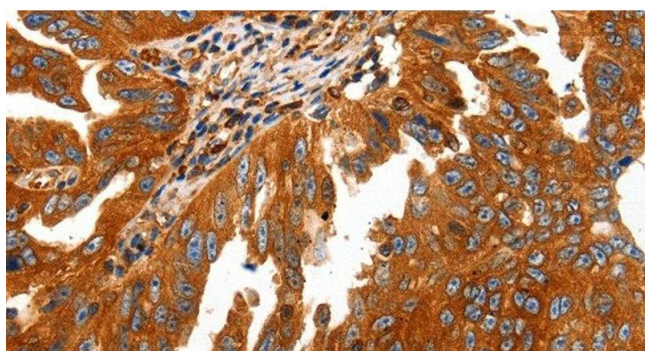
Application Details

| | |
|--------------------|---------------------------------|
| Application Notes: | WB 1:200-1:1000, IHC 1:50-1:200 |
| Restrictions: | For Research Use only |

Handling

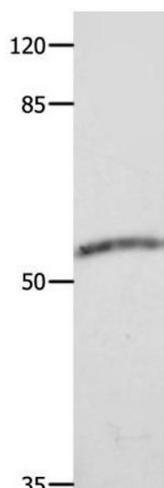
| | |
|--------------------|--|
| Format: | Liquid |
| Concentration: | 0.4 mg/mL |
| Buffer: | PBS with 0.05 % sodium azide and 50 % glycerol, PH7.4 |
| Preservative: | Sodium azide |
| Precaution of Use: | This product contains Sodium azide: a POISONOUS AND HAZARDOUS SUBSTANCE which should be handled by trained staff only. |
| Storage: | -20 °C |
| Storage Comment: | Store at -20°C. Avoid freeze / thaw cycles. |

Images



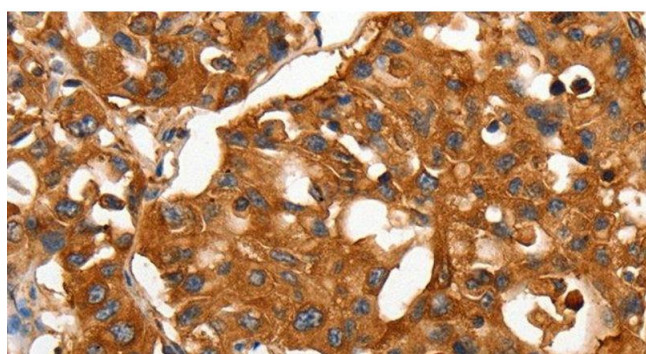
Immunohistochemistry (Paraffin-embedded Sections)

Image 1. Immunohistochemistry of paraffin-embedded Human ovarian cancer using CAP2 Polyclonal Antibody at dilution of 1:50



Western Blotting

Image 2. Western Blot analysis of Human fetal muscle tissue using CAP2 Polyclonal Antibody at dilution of 1:600



Immunohistochemistry (Paraffin-embedded Sections)

Image 3. Immunohistochemistry of paraffin-embedded Human lung cancer using CAP2 Polyclonal Antibody at dilution of 1:50