

Datasheet for ABIN7234862

**anti-CTNNA1 antibody****2** Images[Go to Product page](#)

## Overview

Quantity:	200 µL
Target:	CTNNA1
Reactivity:	Human, Mouse
Host:	Rabbit
Clonality:	Polyclonal
Conjugate:	This CTNNA1 antibody is un-conjugated
Application:	Western Blotting (WB), Immunohistochemistry (IHC), ELISA

## Product Details

Immunogen:	Recombinant protein of human CTNNA1
Isotype:	IgG
Characteristics:	Polyclonal Antibody
Purification:	Affinity purification

## Target Details

Target:	CTNNA1
Alternative Name:	CTNNA1 ( <a href="#">CTNNA1 Products</a> )
Background:	Catenin alpha-1 is a protein that in humans is encoded by the CTNNA1 gene. Associates with the cytoplasmic domain of a variety of cadherins. The association of catenins to cadherins produces a complex which is linked to the actin filament network, and which seems to be of primary importance for cadherins cell-adhesion properties. Can associate with both E- and N-

## Target Details

cadherins. Originally believed to be a stable component of E-cadherin/catenin adhesion complexes and to mediate the linkage of cadherins to the actin cytoskeleton at adherens junctions. In contrast, cortical actin was found to be much more dynamic than E-cadherin/catenin complexes and CTNNA1 was shown not to bind to F-actin when assembled in the complex suggesting a different linkage between actin and adherens junctions components.

Molecular Weight: 100 kDa

UniProt: [P35221](#)

Pathways: [Regulation of Muscle Cell Differentiation](#), [Cell-Cell Junction Organization](#), [Maintenance of Protein Location](#)

## Application Details

Application Notes: WB 1:500-1:2000, IHC 1:50-1:200

Restrictions: For Research Use only

## Handling

Format: Liquid

Concentration: 0.2 mg/mL

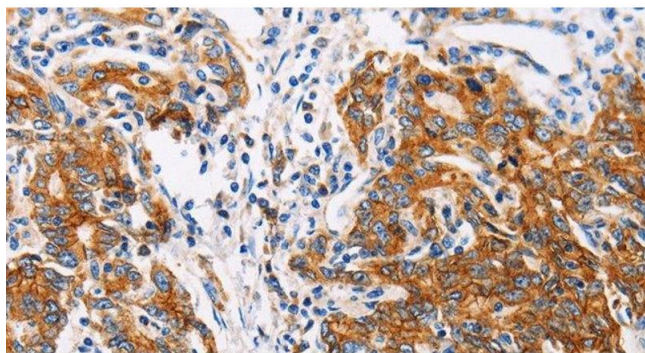
Buffer: PBS with 0.05 % sodium azide and 50 % glycerol, pH7.4

Preservative: Sodium azide

Precaution of Use: This product contains Sodium azide: a POISONOUS AND HAZARDOUS SUBSTANCE which should be handled by trained staff only.

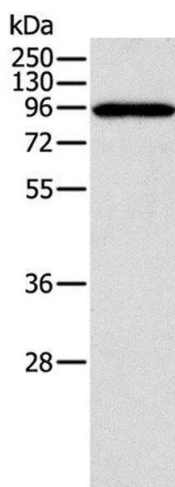
Storage: -20 °C

Storage Comment: Store at -20°C. Avoid freeze / thaw cycles.



#### Immunohistochemistry (Paraffin-embedded Sections)

**Image 1.** Immunohistochemistry of paraffin-embedded Human gastric cancer using CTNNA1 Polyclonal Antibody at dilution of 1:35



#### Western Blotting

**Image 2.** Western Blot analysis of A431 cell using CTNNA1 Polyclonal Antibody at dilution of 1:600