

Datasheet for ABIN7234890

anti-CEBPE antibody[Go to Product page](#)**1** Image

Overview

Quantity:	200 µL
Target:	CEBPE
Reactivity:	Human, Rat, Mouse
Host:	Rabbit
Clonality:	Polyclonal
Application:	Western Blotting (WB), ELISA

Product Details

Immunogen:	Recombinant protein of human CEBPE
Isotype:	IgG
Characteristics:	Polyclonal Antibody
Purification:	Affinity purification

Target Details

Target:	CEBPE
Alternative Name:	CEBP epsilon (CEBPE Products)
Background:	The protein encoded by this gene is a bZIP transcription factor which can bind as a homodimer to certain DNA regulatory regions. It can also form heterodimers with the related protein CEBP-delta. The encoded protein may be essential for terminal differentiation and functional maturation of committed granulocyte progenitor cells. Mutations in this gene have been associated with Specific Granule Deficiency, a rare congenital disorder. Multiple variants of this

Target Details

gene have been described, but the full-length nature of only one has been determined.

Molecular Weight: 31 kDa

UniProt: [Q15744](#)

Pathways: [Cellular Response to Molecule of Bacterial Origin](#)

Application Details

Application Notes: WB 1:500-1:2000

Restrictions: For Research Use only

Handling

Format: Liquid

Concentration: 0.2 mg/mL

Buffer: PBS with 0.05 % sodium azide and 50 % glycerol, PH7.4

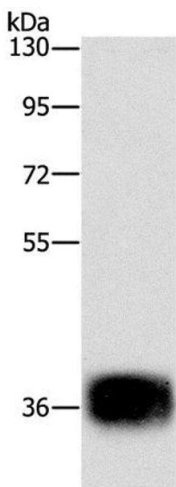
Preservative: Sodium azide

Precaution of Use: This product contains Sodium azide: a POISONOUS AND HAZARDOUS SUBSTANCE which should be handled by trained staff only.

Storage: -20 °C

Storage Comment: Store at -20°C. Avoid freeze / thaw cycles.

Images



Western Blotting

Image 1. Western Blot analysis of Mouse heart tissue using CEBP epsilon Polyclonal Antibody at dilution of 1:500