



[Go to Product page](#)

Datasheet for ABIN7234918

## anti-COL3A1 antibody

### 3 Images

#### Overview

Quantity:	200 µL
Target:	COL3A1
Reactivity:	Human, Mouse, Rat
Host:	Rabbit
Clonality:	Polyclonal
Conjugate:	This COL3A1 antibody is un-conjugated
Application:	ELISA, Immunohistochemistry (IHC)

#### Product Details

Immunogen:	Recombinant protein of human COL3A1
Isotype:	IgG
Characteristics:	Polyclonal Antibody
Purification:	Affinity purification

#### Target Details

Target:	COL3A1
Alternative Name:	COL3A1 ( <a href="#">COL3A1 Products</a> )
Background:	This gene encodes the pro-alpha1 chains of type III collagen, a fibrillar collagen that is found in extensible connective tissues such as skin, lung, uterus, intestine and the vascular system, frequently in association with type I collagen. Mutations in this gene are associated with Ehlers-Danlos syndrome types IV, and with aortic and arterial aneurysms. Two transcripts, resulting

## Target Details

from the use of alternate polyadenylation signals, have been identified for this gene.

UniProt: [P02461](#)

Pathways: [Autophagy](#), [Growth Factor Binding](#)

## Application Details

Application Notes: IHC 1:50-1:200

Restrictions: For Research Use only

## Handling

Format: Liquid

Concentration: 0.4 mg/mL

Buffer: PBS with 0.05 % sodium azide and 50 % glycerol, PH7.4

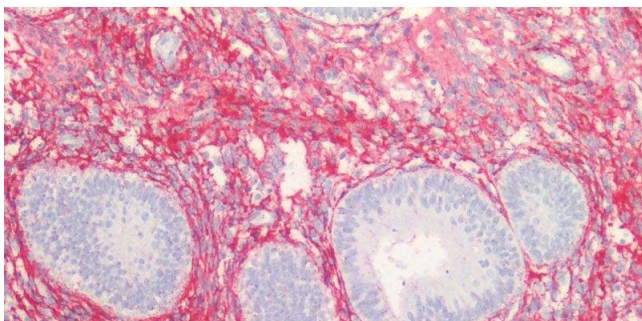
Preservative: Sodium azide

Precaution of Use: This product contains Sodium azide: a POISONOUS AND HAZARDOUS SUBSTANCE which should be handled by trained staff only.

Storage: -20 °C

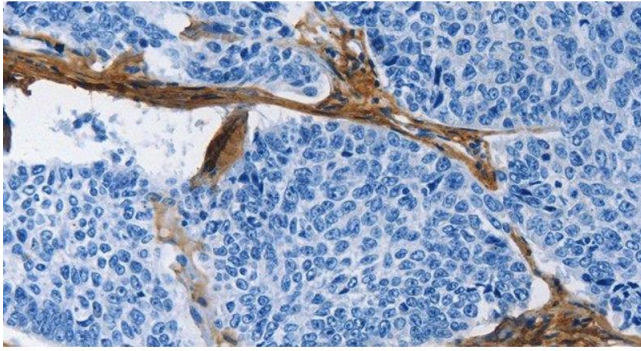
Storage Comment: Store at -20°C. Avoid freeze / thaw cycles.

## Images



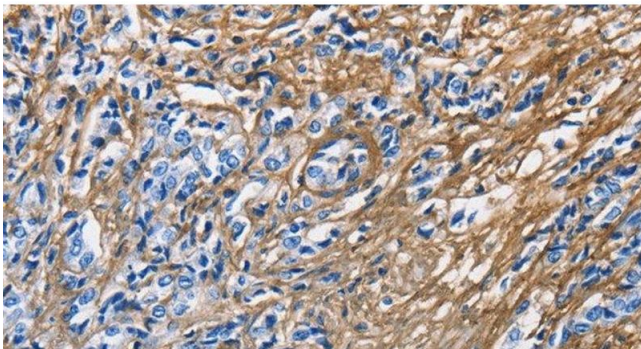
### Immunohistochemistry (Paraffin-embedded Sections)

**Image 1.** Immunohistochemistry of paraffin-embedded Human endometrium and prostate using COL3A1 Polyclonal Antibody at dilution of 1:100.



#### Immunohistochemistry (Paraffin-embedded Sections)

**Image 2.** Immunohistochemistry of paraffin-embedded Human lung cancer tissue using COL3A1 Polyclonal Antibody at dilution 1:60



#### Immunohistochemistry (Paraffin-embedded Sections)

**Image 3.** Immunohistochemistry of paraffin-embedded Human prostate cancer tissue using COL3A1 Polyclonal Antibody at dilution 1:60