

Datasheet for ABIN7234922

anti-COX4NB antibody**3** Images[Go to Product page](#)

Overview

Quantity:	200 µL
Target:	COX4NB
Reactivity:	Human, Mouse, Rat
Host:	Rabbit
Clonality:	Polyclonal
Conjugate:	This COX4NB antibody is un-conjugated
Application:	Western Blotting (WB), ELISA, Immunohistochemistry (IHC)

Product Details

Immunogen:	Recombinant protein of human EMC8
Isotype:	IgG
Characteristics:	Polyclonal Antibody
Purification:	Affinity purification

Target Details

Target:	COX4NB
Alternative Name:	EMC8 (COX4NB Products)
Background:	COX4NB (Neighbor of COX4) is a 210 amino acid protein encoded by the human gene COX4NB. COX4NB belongs to the UPF0172 (NOC4) family and is found on chromosome 16, adjacent to the gene that encodes COX4. The GAN gene is located on chromosome 16 and, with mutation, may lead to giant axonal neuropathy, a nervous system disorder characterized by increasing

Target Details

malfunction with growth. The rare disorder Rubinstein-Taybi syndrome is also associated with chromosome 16 through the CREBBP gene which encodes a critical CREB binding protein. Crohn's disease is a gastrointestinal inflammatory condition associated with chromosome 16 through the NOD2 gene. An association with systemic lupus erythematosus and a number of other auto-immune disorders with the pericentromeric region of chromosome 16 has led to the identification of SLC5A11 as a potential autoimmune modifier.

Molecular Weight: 24 kDa

UniProt: [O43402](#)

Application Details

Application Notes: WB 1:500-1:2000, IHC 1:50-1:200

Restrictions: For Research Use only

Handling

Format: Liquid

Concentration: 0.4 mg/mL

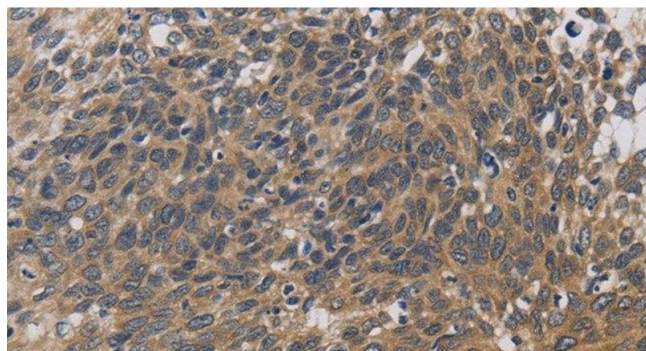
Buffer: PBS with 0.05 % sodium azide and 50 % glycerol, PH7.4

Preservative: Sodium azide

Precaution of Use: This product contains Sodium azide: a POISONOUS AND HAZARDOUS SUBSTANCE which should be handled by trained staff only.

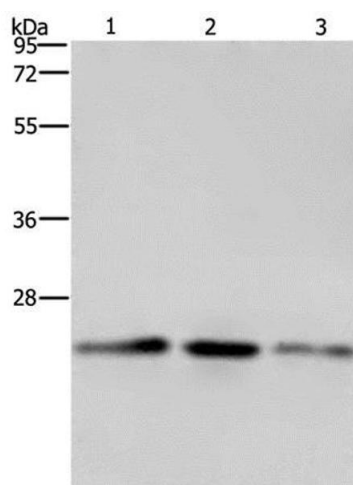
Storage: -20 °C

Storage Comment: Store at -20°C. Avoid freeze / thaw cycles.



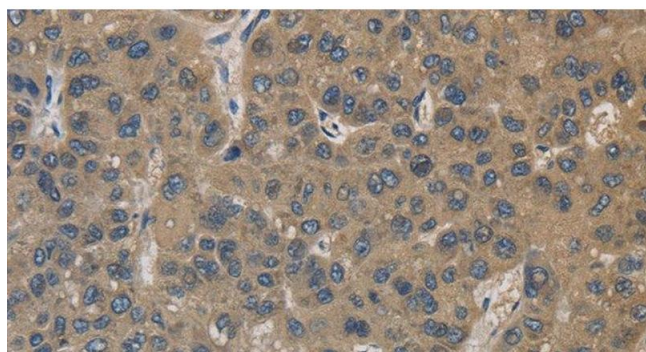
Immunohistochemistry (Paraffin-embedded Sections)

Image 1. Immunohistochemistry of paraffin-embedded Human cervical cancer using EMC8 Polyclonal Antibody at dilution of 1:30



Western Blotting

Image 2. Western Blot analysis of A549, Hela and HT-29 cell using EMC8 Polyclonal Antibody at dilution of 1:600



Immunohistochemistry (Paraffin-embedded Sections)

Image 3. Immunohistochemistry of paraffin-embedded Human liver cancer using EMC8 Polyclonal Antibody at dilution of 1:30