



[Go to Product page](#)

Datasheet for ABIN7234935

anti-CRTAM antibody

2 Images

Overview

Quantity:	200 µL
Target:	CRTAM
Reactivity:	Human
Host:	Rabbit
Clonality:	Polyclonal
Application:	Western Blotting (WB), ELISA, Immunohistochemistry (IHC)

Product Details

Immunogen:	Recombinant protein of human CRTAM
Isotype:	IgG
Characteristics:	Polyclonal Antibody
Purification:	Affinity purification

Target Details

Target:	CRTAM
Alternative Name:	CRTAM (CRTAM Products)
Background:	The CRTAM gene is upregulated in CD4 (see MIM 186940)-positive and CD8 (see CD8A, MIM 186910)-positive T cells and encodes a type I transmembrane protein with V and C1-like Ig domains. Interaction with CADM1 promotes natural killer (NK) cell cytotoxicity and interferon-gamma (IFN-gamma) secretion by CD8+ cells in vitro as well as NK cell-mediated rejection of tumors expressing CADM3 in vivo.

Target Details

Molecular Weight:	Observed_MW: Refer to Figures Calculated_MW: 45 kDa
UniProt:	O95727
Pathways:	Regulation of Leukocyte Mediated Immunity , Positive Regulation of Immune Effector Process , Activated T Cell Proliferation

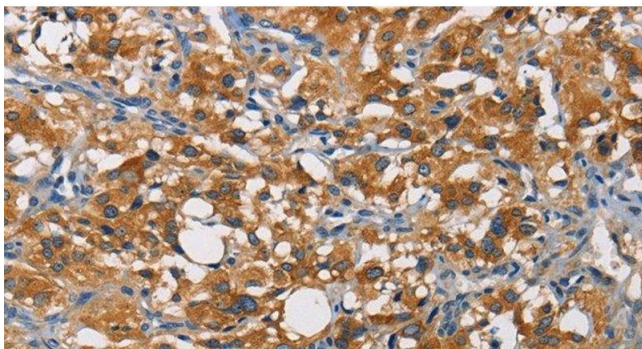
Application Details

Application Notes:	WB 1:500-1:2000, IHC 1:50-1:200
Restrictions:	For Research Use only

Handling

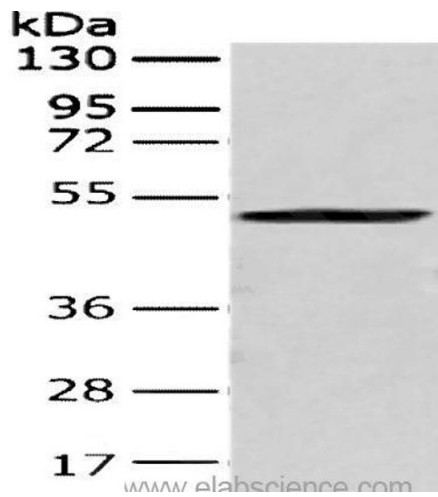
Format:	Liquid
Concentration:	0.3 mg/mL
Buffer:	PBS with 0.05 % sodium azide and 50 % glycerol, PH7.4
Preservative:	Sodium azide
Precaution of Use:	This product contains Sodium azide: a POISONOUS AND HAZARDOUS SUBSTANCE which should be handled by trained staff only.
Storage:	-20 °C
Storage Comment:	Store at -20°C. Avoid freeze / thaw cycles.

Images



Immunohistochemistry (Paraffin-embedded Sections)

Image 1. Immunohistochemistry of paraffin-embedded Human thyroid cancer tissue using CRTAM Polyclonal Antibody at dilution of 1:60



Western Blotting

Image 2. Western Blot analysis of 293T cell using CRTAM Polyclonal Antibody at dilution of 1:250