



[Go to Product page](#)

Datasheet for ABIN7234947

## anti-Cullin 7 antibody

### 2 Images

#### Overview

Quantity:	200 µL
Target:	Cullin 7 (CUL7)
Reactivity:	Human, Rat
Host:	Rabbit
Clonality:	Polyclonal
Application:	ELISA, Immunohistochemistry (IHC)

#### Product Details

Immunogen:	Recombinant protein of human CUL7
Isotype:	IgG
Characteristics:	Polyclonal Antibody
Purification:	Affinity purification

#### Target Details

Target:	Cullin 7 (CUL7)
Alternative Name:	<a href="#">CUL7 (CUL7 Products)</a>
Background:	The protein encoded by this gene is a component of an E3 ubiquitin-protein ligase complex. The encoded protein interacts with TP53, CUL9, and FBXW8 proteins. Defects in this gene are a cause of 3M syndrome type 1 (3M1). Two transcript variants encoding different isoforms have been found for this gene.
UniProt:	<a href="#">Q14999</a>

## Target Details

---

Pathways: [ER-Nucleus Signaling](#)

## Application Details

---

Application Notes: IHC 1:50-1:200

Restrictions: For Research Use only

## Handling

---

Format: Liquid

Concentration: 0.5 mg/mL

Buffer: PBS with 0.05 % sodium azide and 50 % glycerol, PH7.4

Preservative: Sodium azide

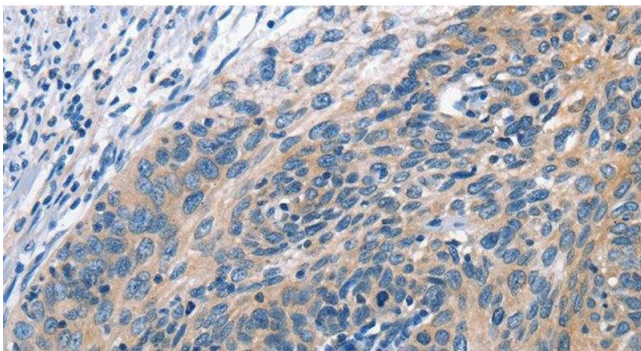
Precaution of Use: This product contains Sodium azide: a POISONOUS AND HAZARDOUS SUBSTANCE which should be handled by trained staff only.

Storage: -20 °C

Storage Comment: Store at -20°C. Avoid freeze / thaw cycles.

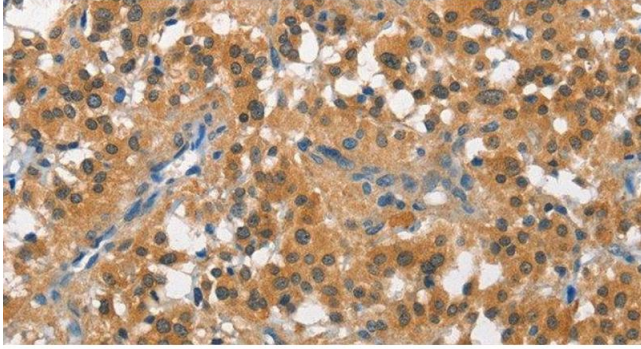
## Images

---



### Immunohistochemistry (Paraffin-embedded Sections)

**Image 1.** Immunohistochemistry of paraffin-embedded Human cervical cancer tissue using CUL7 Polyclonal Antibody at dilution 1:50



### Immunohistochemistry (Paraffin-embedded Sections)

**Image 2.** Immunohistochemistry of paraffin-embedded Human thyroid cancer tissue using CUL7 Polyclonal Antibody at dilution 1:50