

Datasheet for ABIN7234959
anti-SDCCAG3 antibody[Go to Product page](#)

3 Images

Overview

Quantity:	200 µL
Target:	SDCCAG3
Reactivity:	Human, Mouse
Host:	Rabbit
Clonality:	Polyclonal
Application:	ELISA, Western Blotting (WB), Immunohistochemistry (IHC)

Product Details

Immunogen:	Recombinant protein of human SDCCAG3
Isotype:	IgG
Characteristics:	Polyclonal Antibody
Purification:	Affinity purification

Target Details

Target:	SDCCAG3
Alternative Name:	SDCCAG3 (SDCCAG3 Products)
Background:	SDCCAG3 protein contains the region similar to the coiled-coil domain of the myosin tail. The same domain is present in the proteins related to the organelles/proteins trafficking, such as kinesin, Golgin-160, and dynein. SDCCAG3 function might be related to protein trafficking and secretion, May be involved in modulation of TNF response, May be involved in presentation of TNFRSF1A on the cell surface. Interaction of SDCCAG3 with the Arf GTPase activating protein

Target Details

GIT1 (G protein-coupled receptor kinase interactor-1). Overexpression of an ArfGAP-negative version of GIT1 also results in an increased number of multinucleate cells suggesting regulation of Arf-mediated vesicular trafficking or signaling via SDCCAG3.

Molecular Weight: 48 kDa

UniProt: [Q96C92](#)

Application Details

Application Notes: WB 1:500-1:2000, IHC 1:50-1:200

Restrictions: For Research Use only

Handling

Format: Liquid

Concentration: 0.5 mg/mL

Buffer: PBS with 0.05 % sodium azide and 50 % glycerol, PH7.4

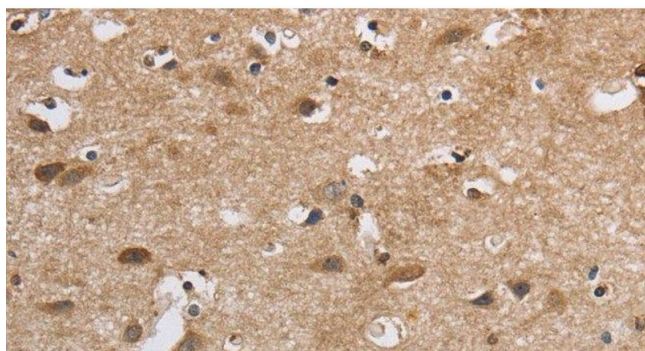
Preservative: Sodium azide

Precaution of Use: This product contains Sodium azide: a POISONOUS AND HAZARDOUS SUBSTANCE which should be handled by trained staff only.

Storage: -20 °C

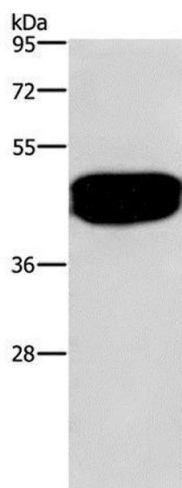
Storage Comment: Store at -20°C. Avoid freeze / thaw cycles.

Images



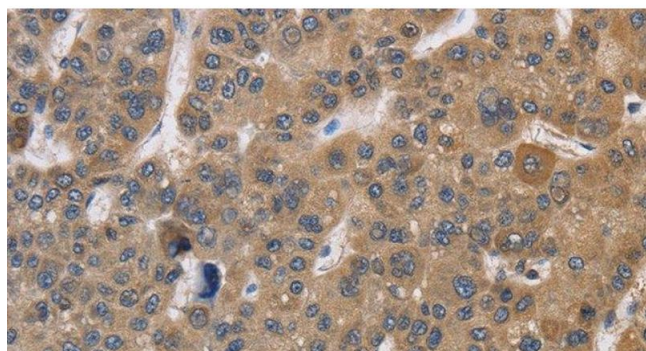
Immunohistochemistry (Paraffin-embedded Sections)

Image 1. Immunohistochemistry of paraffin-embedded Human brain using SDCCAG3 Polyclonal Antibody at dilution of 1:30



Western Blotting

Image 2. Western Blot analysis of Human prostate tissue using SDCCAG3 Polyclonal Antibody at dilution of 1:500



Immunohistochemistry (Paraffin-embedded Sections)

Image 3. Immunohistochemistry of paraffin-embedded Human liver cancer using SDCCAG3 Polyclonal Antibody at dilution of 1:30