

Datasheet for ABIN7235007

**anti-ELAVL1 antibody**[Go to Product page](#)**3** Images

## Overview

Quantity:	200 µL
Target:	ELAVL1
Reactivity:	Human, Mouse
Host:	Rabbit
Clonality:	Polyclonal
Application:	Western Blotting (WB), ELISA, Immunohistochemistry (IHC)

## Product Details

Immunogen:	Recombinant protein of human ELAVL1
Isotype:	IgG
Characteristics:	Polyclonal Antibody
Purification:	Affinity purification

## Target Details

Target:	ELAVL1
Alternative Name:	ELAVL1 ( <a href="#">ELAVL1 Products</a> )
Background:	The protein encoded by this gene is a member of the ELAVL family of RNA-binding proteins that contain several RNA recognition motifs, and selectively bind AU-rich elements (AREs) found in the 3' untranslated regions of mRNAs. AREs signal degradation of mRNAs as a means to regulate gene expression, thus by binding AREs, the ELAVL family of proteins play a role in stabilizing ARE-containing mRNAs. This gene has been implicated in a variety of biological

## Target Details

processes and has been linked to a number of diseases, including cancer. It is highly expressed in many cancers, and could be potentially useful in cancer diagnosis, prognosis, and therapy.

Molecular Weight:	36 kDa
UniProt:	<a href="#">Q15717</a>
Pathways:	<a href="#">AMPK Signaling</a>

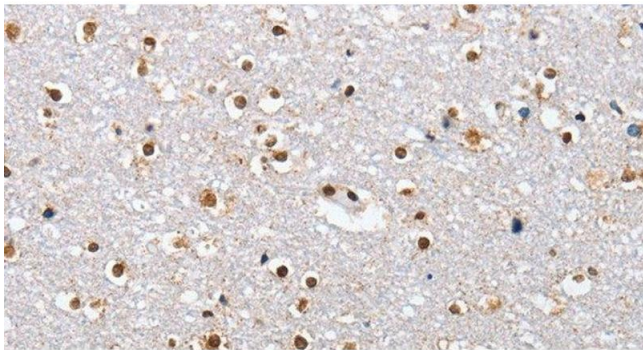
## Application Details

Application Notes:	WB 1:500-1:2000, IHC 1:50-1:200
Restrictions:	For Research Use only

## Handling

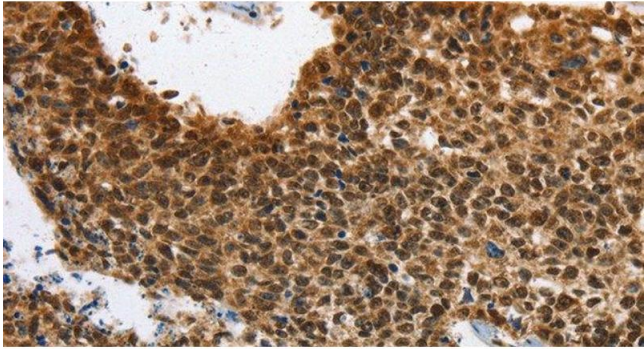
Format:	Liquid
Concentration:	0.6 mg/mL
Buffer:	PBS with 0.05 % sodium azide and 50 % glycerol, PH7.4
Preservative:	Sodium azide
Precaution of Use:	This product contains Sodium azide: a POISONOUS AND HAZARDOUS SUBSTANCE which should be handled by trained staff only.
Storage:	-20 °C
Storage Comment:	Store at -20°C. Avoid freeze / thaw cycles.

## Images



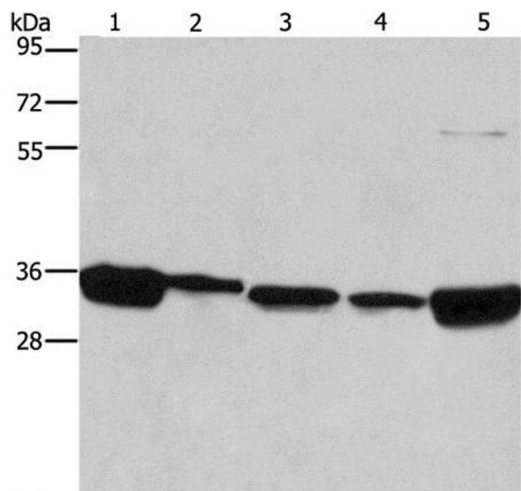
**Immunohistochemistry (Paraffin-embedded Sections)**

**Image 1.** Immunohistochemistry of paraffin-embedded Human brain using ELAVL1 Polyclonal Antibody at dilution of 1:40



Immunohistochemistry (Paraffin-embedded Sections)

**Image 2.** Immunohistochemistry of paraffin-embedded Human lung cancer using ELAVL1 Polyclonal Antibody at dilution of 1:40



Western Blotting

**Image 3.** Western Blot analysis of 293T, A431, NIH/3T3, hela and hepG2 cell using ELAVL1 Polyclonal Antibody at dilution of 1:667