

Datasheet for ABIN7235068

anti-GNB1 antibody[Go to Product page](#)**1** Image

Overview

Quantity:	200 µL
Target:	GNB1
Reactivity:	Human, Mouse, Rat
Host:	Rabbit
Clonality:	Polyclonal
Conjugate:	This GNB1 antibody is un-conjugated
Application:	Western Blotting (WB), ELISA

Product Details

Immunogen:	Recombinant protein of human GNB1
Isotype:	IgG
Characteristics:	Polyclonal Antibody
Purification:	Affinity purification

Target Details

Target:	GNB1
Alternative Name:	GNB1 (GNB1 Products)
Background:	Heterotrimeric guanine nucleotide-binding proteins (G proteins), which integrate signals between receptors and effector proteins, are composed of an alpha, a beta, and a gamma subunit. These subunits are encoded by families of related genes. This gene encodes a beta subunit. Beta subunits are important regulators of alpha subunits, as well as of certain signal

Target Details

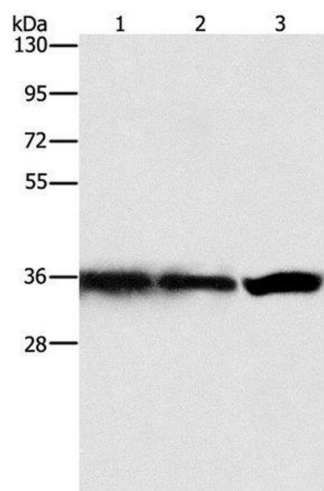
	transduction receptors and effectors. This gene uses alternative polyadenylation signals.
Molecular Weight:	37 kDa
UniProt:	P62873
Pathways:	Myometrial Relaxation and Contraction , Regulation of G-Protein Coupled Receptor Protein Signaling , CXCR4-mediated Signaling Events , Phototransduction , Thromboxane A2 Receptor Signaling , SARS-CoV-2 Protein Interactome

Application Details

Application Notes:	WB 1:500-1:2000
Restrictions:	For Research Use only

Handling

Format:	Liquid
Concentration:	0.2 mg/mL
Buffer:	PBS with 0.05 % sodium azide and 50 % glycerol, PH7.4
Preservative:	Sodium azide
Precaution of Use:	This product contains Sodium azide: a POISONOUS AND HAZARDOUS SUBSTANCE which should be handled by trained staff only.
Storage:	-20 °C
Storage Comment:	Store at -20°C. Avoid freeze / thaw cycles.



Western Blotting

Image 1. Western Blot analysis of Hela, 293T and 231 cell using GNB1 Polyclonal Antibody at dilution of 1:450