

Datasheet for ABIN7235076

anti-LGALS1/Galectin 1 antibody[Go to Product page](#)**1** Image

Overview

Quantity:	200 µL
Target:	LGALS1/Galectin 1 (LGALS1)
Reactivity:	Human, Mouse, Rat
Host:	Rabbit
Clonality:	Polyclonal
Conjugate:	This LGALS1/Galectin 1 antibody is un-conjugated
Application:	Western Blotting (WB), ELISA

Product Details

Immunogen:	Recombinant protein of human LGALS1
Isotype:	IgG
Characteristics:	Polyclonal Antibody
Purification:	Affinity purification

Target Details

Target:	LGALS1/Galectin 1 (LGALS1)
Alternative Name:	Galectin 1 (LGALS1 Products)
Background:	The galectins are a family of beta-galactoside-binding proteins implicated in modulating cell-cell and cell-matrix interactions. This gene product may act as an autocrine negative growth factor that regulates cell proliferation. May regulate apoptosis, cell proliferation and cell differentiation. Binds beta-galactoside and a wide array of complex carbohydrates. Inhibits

Target Details

	CD45 protein phosphatase activity and therefore the dephosphorylation of Lyn kinase.
Molecular Weight:	15 kDa
UniProt:	P09382
Pathways:	Carbohydrate Homeostasis

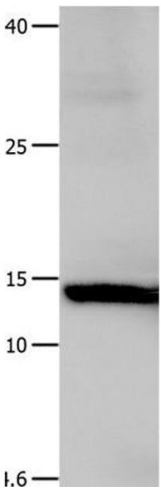
Application Details

Application Notes:	WB 1:500-1:2000
Restrictions:	For Research Use only

Handling

Format:	Liquid
Concentration:	0.4 mg/mL
Buffer:	PBS with 0.05 % sodium azide and 50 % glycerol, PH7.4
Preservative:	Sodium azide
Precaution of Use:	This product contains Sodium azide: a POISONOUS AND HAZARDOUS SUBSTANCE which should be handled by trained staff only.
Storage:	-20 °C
Storage Comment:	Store at -20°C. Avoid freeze / thaw cycles.

Images



Western Blotting

Image 1. Western Blot analysis of Hela cell using Galectin 1 Polyclonal Antibody at dilution of 1:500