



Datasheet for ABIN7235124 anti-HGF antibody



[Go to Product page](#)

2 Images

Overview

Quantity:	200 µL
Target:	HGF
Reactivity:	Human, Rat, Mouse
Host:	Rabbit
Clonality:	Polyclonal
Application:	Immunohistochemistry (IHC), ELISA

Product Details

Immunogen:	Recombinant protein of human HGF
Isotype:	IgG
Characteristics:	Polyclonal Antibody
Purification:	Affinity purification

Target Details

Target:	HGF
Alternative Name:	HGF (HGF Products)
Background:	<p>Hepatocyte growth factor regulates cell growth, cell motility, and morphogenesis by activating a tyrosine kinase signaling cascade after binding to the proto-oncogenic c-Met receptor.</p> <p>Hepatocyte growth factor is secreted by mesenchymal cells and acts as a multi-functional cytokine on cells of mainly epithelial origin. Its ability to stimulate mitogenesis, cell motility, and matrix invasion gives it a central role in angiogenesis, tumorigenesis, and tissue regeneration.</p>

Target Details

It is secreted as a single inactive polypeptide and is cleaved by serine proteases into a 69- kDa alpha-chain and 34- kDa beta-chain. A disulfide bond between the alpha and beta chains produces the active, heterodimeric molecule.

UniProt: [P14210](#)

Pathways: [RTK Signaling](#), [Carbohydrate Homeostasis](#), [Glycosaminoglycan Metabolic Process](#), [Synaptic Membrane](#), [Signaling of Hepatocyte Growth Factor Receptor](#)

Application Details

Application Notes: IHC 1:50-1:200

Restrictions: For Research Use only

Handling

Format: Liquid

Concentration: 0.7 mg/mL

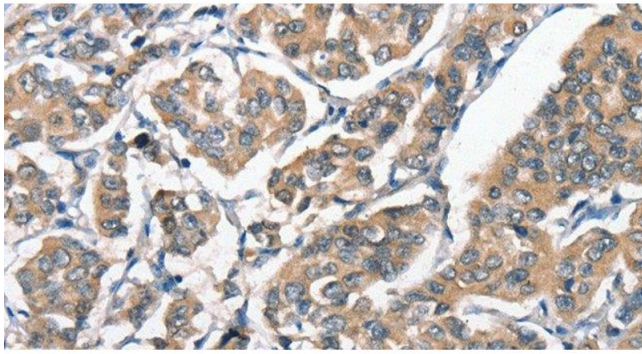
Buffer: PBS with 0.05 % sodium azide and 50 % glycerol, PH7.4

Preservative: Sodium azide

Precaution of Use: This product contains Sodium azide: a POISONOUS AND HAZARDOUS SUBSTANCE which should be handled by trained staff only.

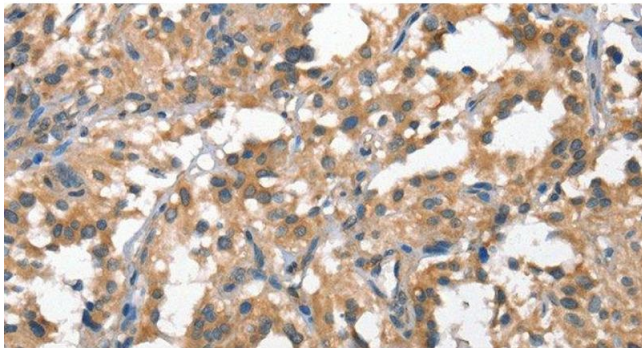
Storage: -20 °C

Storage Comment: Store at -20°C. Avoid freeze / thaw cycles.



Immunohistochemistry (Paraffin-embedded Sections)

Image 1. Immunohistochemistry of paraffin-embedded Human breast cancer tissue using HGF Polyclonal Antibody at dilution 1:65



Immunohistochemistry (Paraffin-embedded Sections)

Image 2. Immunohistochemistry of paraffin-embedded Human thyroid cancer tissue using HGF Polyclonal Antibody at dilution 1:65