

Datasheet for ABIN723515

**anti-Adrenomedullin antibody (AA 122-140)**[Go to Product page](#)**1** Image

## Overview

Quantity:	100 µL
Target:	Adrenomedullin (ADM)
Binding Specificity:	AA 122-140
Reactivity:	Rat
Host:	Rabbit
Clonality:	Polyclonal
Conjugate:	This Adrenomedullin antibody is un-conjugated
Application:	ELISA, Immunofluorescence (Cultured Cells) (IF (cc)), Immunofluorescence (Paraffin-embedded Sections) (IF (p)), Immunohistochemistry (Paraffin-embedded Sections) (IHC (p)), Immunohistochemistry (Frozen Sections) (IHC (fro))

## Product Details

Immunogen:	KLH conjugated synthetic peptide derived from human Adrenomedullin
Isotype:	IgG
Cross-Reactivity:	Rat
Predicted Reactivity:	Human, Mouse, Dog, Cow, Horse
Purification:	Purified by Protein A.

## Target Details

Target:	Adrenomedullin (ADM)
---------	----------------------

## Target Details

Alternative Name:	Adrenomedullin ( <a href="#">ADM Products</a> )
Target Type:	Hormone
Background:	<p>Synonyms: AM, PAMP, ADM, Adrenomedullin</p> <p>Background: AM and PAMP are potent hypotensive and vasodilator agents. Numerous actions have been reported most related to the physiologic control of fluid and electrolyte homeostasis. In the kidney, am is diuretic and natriuretic, and both am and pamp inhibit aldosterone secretion by direct adrenal actions. In pituitary gland, both peptides at physiologically relevant doses inhibit basal ACTH secretion. Both peptides appear to act in brain and pituitary gland to facilitate the loss of plasma volume, actions which complement their hypotensive effects in blood vessels.</p>
Gene ID:	133
UniProt:	<a href="#">P35318</a>
Pathways:	<a href="#">Hormone Transport</a> , <a href="#">Hormone Activity</a> , <a href="#">C21-Steroid Hormone Metabolic Process</a> , <a href="#">cAMP Metabolic Process</a> , <a href="#">Myometrial Relaxation and Contraction</a> , <a href="#">Regulation of G-Protein Coupled Receptor Protein Signaling</a> , <a href="#">Tube Formation</a>

## Application Details

Application Notes:	ELISA 1:500-1000 IHC-P 1:200-400 IHC-F 1:100-500 IF(IHC-P) 1:50-200 IF(IHC-F) 1:50-200 IF(ICC) 1:50-200
--------------------	------------------------------------------------------------------------------------------------------------------------

Restrictions: For Research Use only

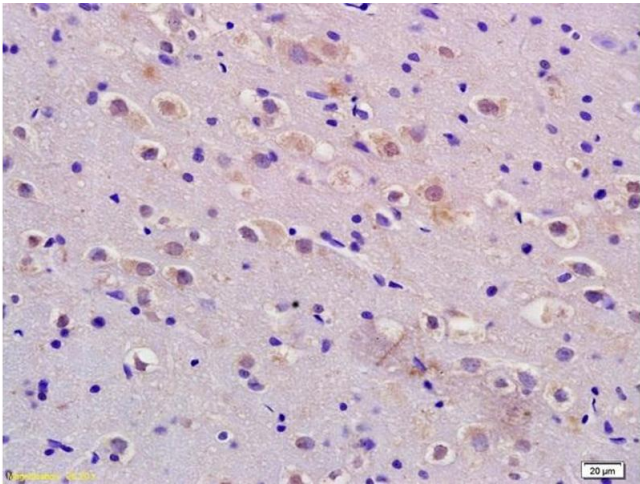
## Handling

Format:	Liquid
Concentration:	1 µg/µL
Buffer:	0.01M TBS( pH 7.4) with 1 % BSA, 0.02 % Proclin300 and 50 % Glycerol.
Preservative:	ProClin
Precaution of Use:	This product contains ProClin: a POISONOUS AND HAZARDOUS SUBSTANCE, which should be

Handling

	handled by trained staff only.
Storage:	4 °C,-20 °C
Storage Comment:	Shipped at 4°C. Store at -20°C for one year. Avoid repeated freeze/thaw cycles.
Expiry Date:	12 months

Images



Immunohistochemistry

**Image 1.** Formalin-fixed and paraffin embedded rat brain labeled with Anti-ADM/AM/Adrenomedullin Polyclonal Antibody, Unconjugated (ABIN723515) at 1:200 followed by conjugation to the secondary antibody and DAB staining.