

Datasheet for ABIN7235197

anti-ILK antibody**3** Images[Go to Product page](#)

Overview

Quantity:	200 µL
Target:	ILK
Reactivity:	Human, Mouse, Rat
Host:	Rabbit
Clonality:	Polyclonal
Application:	Western Blotting (WB), ELISA, Immunohistochemistry (IHC)

Product Details

Immunogen:	Recombinant protein of human ILK
Isotype:	IgG
Characteristics:	Polyclonal Antibody
Purification:	Affinity purification

Target Details

Target:	ILK
Alternative Name:	ILK (ILK Products)
Background:	This gene encodes a protein with a kinase-like domain and four ankyrin-like repeats. The encoded protein associates at the cell membrane with the cytoplasmic domain of beta integrins, where it regulates integrin-mediated signal transduction. Activity of this protein is important in the epithelial to mesenchymal transition, and over-expression of this gene is implicated in tumor growth and metastasis. Alternative splicing results in multiple transcript

Target Details

	variants.
Molecular Weight:	51 kDa
UniProt:	Q13418
Pathways:	Regulation of Muscle Cell Differentiation , Regulation of Cell Size , Maintenance of Protein Location , Skeletal Muscle Fiber Development , Smooth Muscle Cell Migration

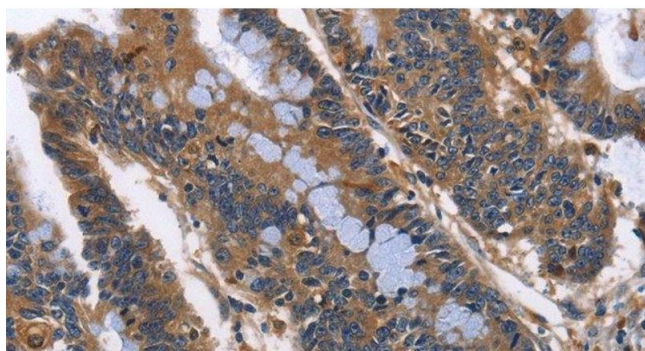
Application Details

Application Notes:	WB 1:500-1:2000, IHC 1:50-1:200
Restrictions:	For Research Use only

Handling

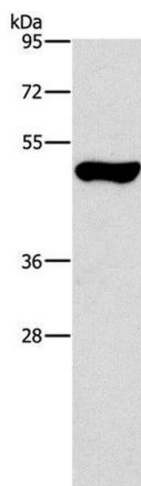
Format:	Liquid
Concentration:	0.3 mg/mL
Buffer:	PBS with 0.05 % sodium azide and 50 % glycerol, PH7.4
Preservative:	Sodium azide
Precaution of Use:	This product contains Sodium azide: a POISONOUS AND HAZARDOUS SUBSTANCE which should be handled by trained staff only.
Storage:	-20 °C
Storage Comment:	Store at -20°C. Avoid freeze / thaw cycles.

Images



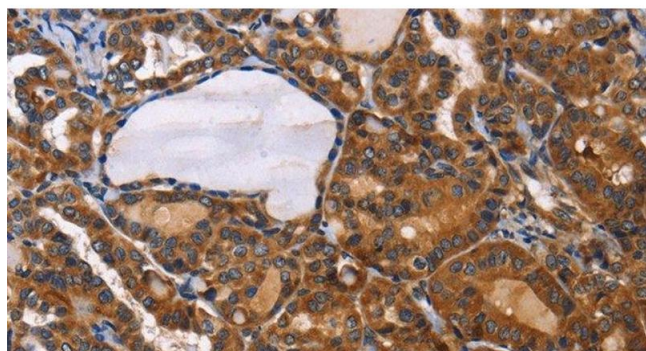
Immunohistochemistry (Paraffin-embedded Sections)

Image 1. Immunohistochemistry of paraffin-embedded Human colon cancer using ILK Polyclonal Antibody at dilution of 1:50



Western Blotting

Image 2. Western Blot analysis of Mouse pancreas tissue using ILK Polyclonal Antibody at dilution of 1:550



Immunohistochemistry (Paraffin-embedded Sections)

Image 3. Immunohistochemistry of paraffin-embedded Human thyroid cancer using ILK Polyclonal Antibody at dilution of 1:50