

Datasheet for ABIN7235249

anti-KIF3A antibody**1** Image[Go to Product page](#)

Overview

Quantity:	200 µL
Target:	KIF3A
Reactivity:	Human, Mouse
Host:	Rabbit
Clonality:	Polyclonal
Conjugate:	This KIF3A antibody is un-conjugated
Application:	Western Blotting (WB), ELISA

Product Details

Immunogen:	Recombinant protein of human KIF3A
Isotype:	IgG
Characteristics:	Polyclonal Antibody
Purification:	Affinity purification

Target Details

Target:	KIF3A
Alternative Name:	KIF3A (KIF3A Products)
Background:	Kinesin-like protein KIF3A is a protein that in humans is encoded by the KIF3A gene. Members of the heterotrimeric kinesin II family of microtubule associated motors generally contain two different motor subunits from the KIF3 family, which includes KIF3A, B and C. KIF3 isoforms mediate anterograde transport of membrane bound organelles in neurons and melanosomes,

Target Details

transport between the endoplasmic reticulum and the Golgi, and transport of protein complexes within cilia and flagella required for their morphogenesis. KIF3A may influence neurogenesis at the level of embryonic cellular events, where the asymmetry of the genetic control circuit controlling left-right (L-R) axis determination is defined. Loss of KIF3A function in mice photoreceptors causes apoptotic cell death, suggesting that kinesin II mediated transport is required for proper cell fate.

Molecular Weight: 80 kDa

UniProt: [Q9Y496](#)

Pathways: [Hedgehog Signaling](#)

Application Details

Application Notes: WB 1:200-1:1000

Restrictions: For Research Use only

Handling

Format: Liquid

Concentration: 0.2 mg/mL

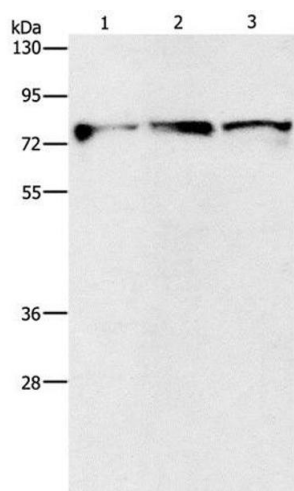
Buffer: PBS with 0.05 % sodium azide and 50 % glycerol, PH7.4

Preservative: Sodium azide

Precaution of Use: This product contains Sodium azide: a POISONOUS AND HAZARDOUS SUBSTANCE which should be handled by trained staff only.

Storage: -20 °C

Storage Comment: Store at -20°C. Avoid freeze / thaw cycles.



Western Blotting

Image 1. Western Blot analysis of Mouse brain and Human fetal brain tissue, Human brain malignant glioma tissue using KIF3A Polyclonal Antibody at dilution of 1:500