

Datasheet for ABIN7235277

anti-MAGEB4 antibody

3 Images

[Go to Product page](#)

Overview

Quantity:	200 µL
Target:	MAGEB4
Reactivity:	Human
Host:	Rabbit
Clonality:	Polyclonal
Conjugate:	This MAGEB4 antibody is un-conjugated
Application:	ELISA, Western Blotting (WB), Immunohistochemistry (IHC)

Product Details

Immunogen:	Recombinant protein of human MAGEB4
Isotype:	IgG
Characteristics:	Polyclonal Antibody
Purification:	Affinity purification

Target Details

Target:	MAGEB4
Alternative Name:	MAGEB4 (MAGEB4 Products)
Background:	This gene is a member of the MAGEB gene family. The members of this family have their entire coding sequences located in the last exon, and the encoded proteins show 50 to 68 sequence identity to each other. The promoters and first exons of the MAGEB genes show considerable variability, suggesting that the existence of this gene family enables the same function to be

Target Details

expressed under different transcriptional controls. The MAGEB genes are clustered on chromosome Xp22-p21. This gene sequence ends in the first intron of MAGEB1, another family member. This gene is expressed in testis.

Molecular Weight: 39 kDa

UniProt: [O15481](#)

Application Details

Application Notes: WB 1:500-1:2000, IHC 1:15-1:50

Restrictions: For Research Use only

Handling

Format: Liquid

Concentration: 0.3 mg/mL

Buffer: PBS with 0.05 % sodium azide and 50 % glycerol, PH7.4

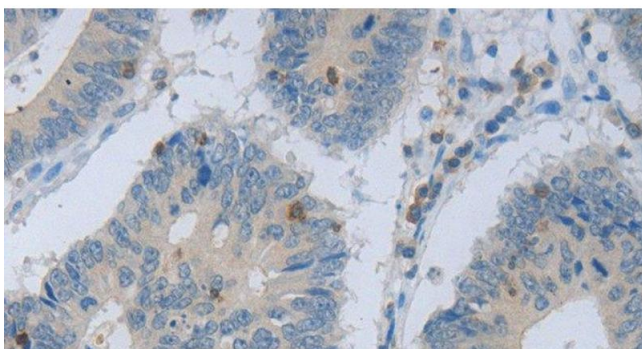
Preservative: Sodium azide

Precaution of Use: This product contains Sodium azide: a POISONOUS AND HAZARDOUS SUBSTANCE which should be handled by trained staff only.

Storage: -20 °C

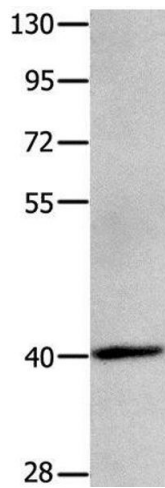
Storage Comment: Store at -20°C. Avoid freeze / thaw cycles.

Images



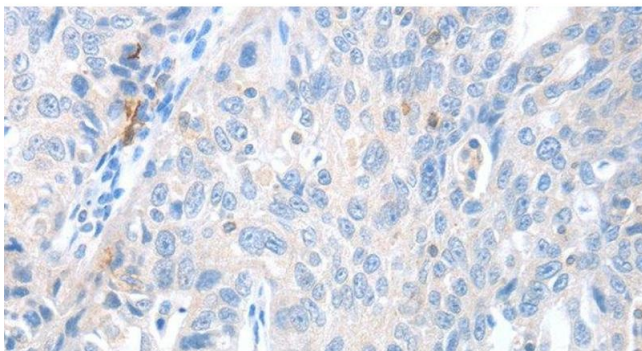
Immunohistochemistry (Paraffin-embedded Sections)

Image 1. Immunohistochemistry of paraffin-embedded Human colon cancer using MAGEB4 Polyclonal Antibody at dilution of 1:40



Western Blotting

Image 2. Western Blot analysis of Human brain glioma tissue using MAGEB4 Polyclonal Antibody at dilution of 1:550



Immunohistochemistry (Paraffin-embedded Sections)

Image 3. Immunohistochemistry of paraffin-embedded Human ovarian cancer using MAGEB4 Polyclonal Antibody at dilution of 1:40