

Datasheet for ABIN7235289
anti-SERPINB5 antibody

3 Images

[Go to Product page](#)

Overview

Quantity:	200 µL
Target:	SERPINB5
Reactivity:	Human, Mouse
Host:	Rabbit
Clonality:	Polyclonal
Conjugate:	This SERPINB5 antibody is un-conjugated
Application:	Western Blotting (WB), Immunohistochemistry (IHC), ELISA

Product Details

Immunogen:	Recombinant protein of human SERPINB5
Isotype:	IgG
Characteristics:	Polyclonal Antibody
Purification:	Affinity purification

Target Details

Target:	SERPINB5
Alternative Name:	SERPINB5 (SERPINB5 Products)
Background:	Maspin (mammary serine protease inhibitor) also known as serpin B5 is a protein that in humans is encoded by the SERPINB5 gene.[1] This protein belongs to the serpin (serine protease inhibitor) superfamily.[1] SERPINB5 also functions as a tumor suppressor gene in epithelial cells. The expressed protein suppresses the ability of cancer cells to invade and

Target Details

metastasize other tissues. The protein also functions as an angiogenesis inhibitor. It blocks the growth, invasion, and metastatic properties of mammary tumors. As it does not undergo the S (stressed) to R (relaxed) conformational transition characteristic of active serpins, it exhibits no serine protease inhibitory activity.

Molecular Weight: 42 kDa

UniProt: [P36952](#)

Pathways: [p53 Signaling](#)

Application Details

Application Notes: WB 1:1000-1:5000, IHC 1:100-1:300

Restrictions: For Research Use only

Handling

Format: Liquid

Concentration: 0.5 mg/mL

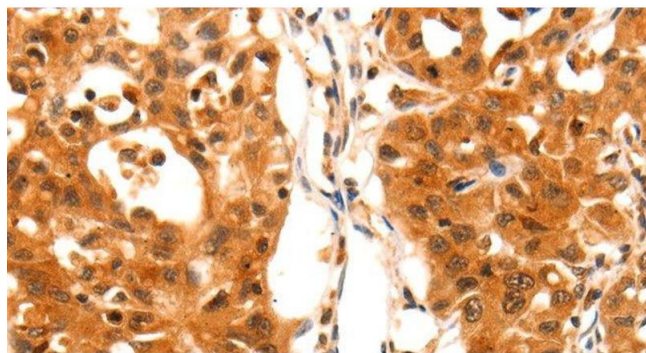
Buffer: PBS with 0.05 % sodium azide and 50 % glycerol, PH7.4

Preservative: Sodium azide

Precaution of Use: This product contains Sodium azide: a POISONOUS AND HAZARDOUS SUBSTANCE which should be handled by trained staff only.

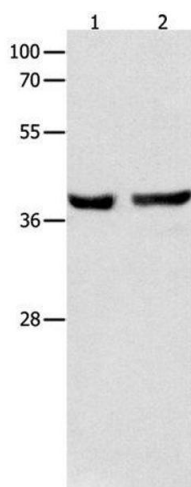
Storage: -20 °C

Storage Comment: Store at -20°C. Avoid freeze / thaw cycles.



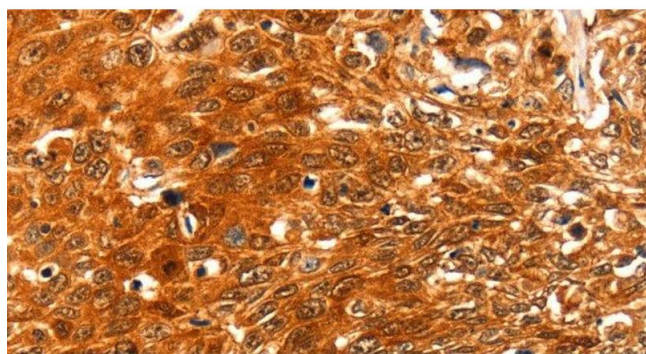
Immunohistochemistry (Paraffin-embedded Sections)

Image 1. Immunohistochemistry of paraffin-embedded Human lung cancer using SERPINB5 Polyclonal Antibody at dilution of 1:60



Western Blotting

Image 2. Western Blot analysis of Mouse esophagus and Human cervical cancer tissue using SERPINB5 Polyclonal Antibody at dilution of 1:1000



Immunohistochemistry (Paraffin-embedded Sections)

Image 3. Immunohistochemistry of paraffin-embedded Human esophagus cancer using SERPINB5 Polyclonal Antibody at dilution of 1:60