

Datasheet for ABIN7235326

**anti-Midkine antibody****2** Images[Go to Product page](#)

## Overview

Quantity:	200 µL
Target:	Midkine (MDK)
Reactivity:	Human
Host:	Rabbit
Clonality:	Polyclonal
Conjugate:	This Midkine antibody is un-conjugated
Application:	ELISA, Immunohistochemistry (IHC)

## Product Details

Immunogen:	Recombinant protein of human MDK
Isotype:	IgG
Characteristics:	Polyclonal Antibody
Purification:	Affinity purification

## Target Details

Target:	Midkine (MDK)
Alternative Name:	MDK ( <a href="#">MDK Products</a> )
Background:	This gene encodes a member of a small family of secreted growth factors that binds heparin and responds to retinoic acid. The encoded protein promotes cell growth, migration, and angiogenesis, in particular during tumorigenesis. This gene has been targeted as a therapeutic for a variety of different disorders. Alternatively spliced transcript variants encoding multiple

## Target Details

isoforms have been observed.

UniProt: [P21741](#)

Pathways: [RTK Signaling](#), [M Phase](#), [Skeletal Muscle Fiber Development](#)

## Application Details

Application Notes: IHC 1:50-1:200

Restrictions: For Research Use only

## Handling

Format: Liquid

Concentration: 0.2 mg/mL

Buffer: PBS with 0.05 % sodium azide and 50 % glycerol, PH7.4

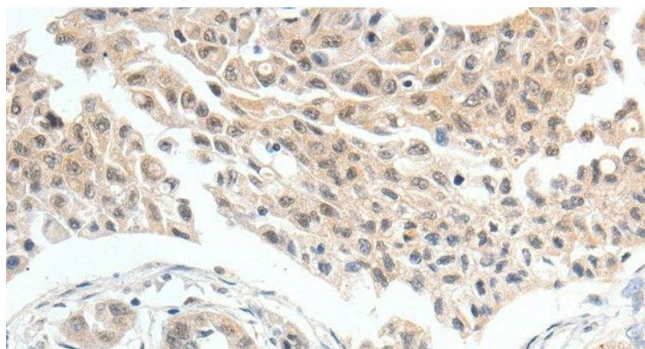
Preservative: Sodium azide

Precaution of Use: This product contains Sodium azide: a POISONOUS AND HAZARDOUS SUBSTANCE which should be handled by trained staff only.

Storage: -20 °C

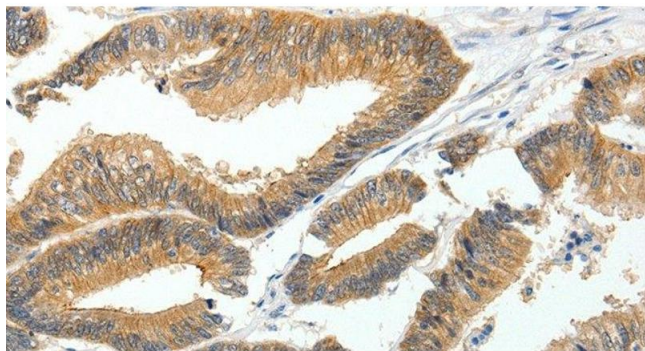
Storage Comment: Store at -20°C. Avoid freeze / thaw cycles.

## Images



### Immunohistochemistry (Paraffin-embedded Sections)

**Image 1.** Immunohistochemistry of paraffin-embedded Human lung cancer tissue using MDK Polyclonal Antibody at dilution 1:60



#### Immunohistochemistry (Paraffin-embedded Sections)

**Image 2.** Immunohistochemistry of paraffin-embedded Human colon cancer tissue using MDK Polyclonal Antibody at dilution 1:60