

Datasheet for ABIN7235370

anti-NAP1L1 antibody

3 Images

[Go to Product page](#)

Overview

Quantity:	200 µL
Target:	NAP1L1
Reactivity:	Human, Mouse, Rat
Host:	Rabbit
Clonality:	Polyclonal
Conjugate:	This NAP1L1 antibody is un-conjugated
Application:	Western Blotting (WB), Immunohistochemistry (IHC), ELISA

Product Details

Immunogen:	Recombinant protein of human NAP1L1
Isotype:	IgG
Characteristics:	Polyclonal Antibody
Purification:	Affinity purification

Target Details

Target:	NAP1L1
Alternative Name:	NAP1L1 (NAP1L1 Products)
Background:	This gene encodes a member of the nucleosome assembly protein (NAP) family. This protein participates in DNA replication and may play a role in modulating chromatin formation and contribute to the regulation of cell proliferation. Alternative splicing of this gene results in several transcript variants, however, not all have been fully described.

Target Details

Molecular Weight: 45 kDa

UniProt: [P55209](#)

Application Details

Application Notes: WB 1:1000-1:5000, IHC 1:50-1:200

Restrictions: For Research Use only

Handling

Format: Liquid

Concentration: 0.5 mg/mL

Buffer: PBS with 0.05 % sodium azide and 50 % glycerol, PH7.4

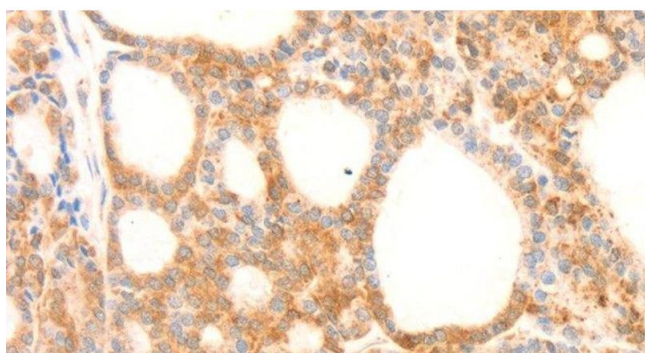
Preservative: Sodium azide

Precaution of Use: This product contains Sodium azide: a POISONOUS AND HAZARDOUS SUBSTANCE which should be handled by trained staff only.

Storage: -20 °C

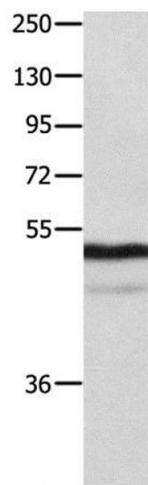
Storage Comment: Store at -20°C. Avoid freeze / thaw cycles.

Images



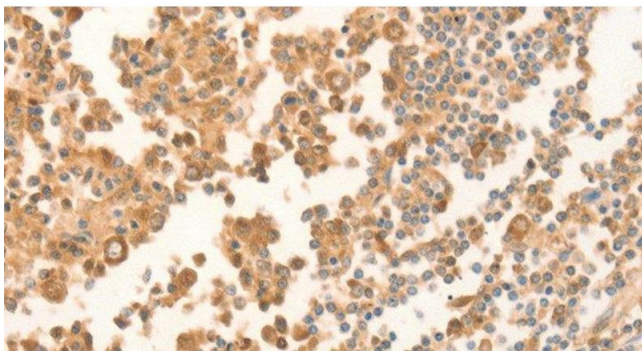
Immunohistochemistry (Paraffin-embedded Sections)

Image 1. Immunohistochemistry of paraffin-embedded Human thyroid cancer using NAP1L1 Polyclonal Antibody at dilution of 1:70



Western Blotting

Image 2. Western Blot analysis of Mouse thymus tissue using NAP1L1 Polyclonal Antibody at dilution of 1:1000



Immunohistochemistry (Paraffin-embedded Sections)

Image 3. Immunohistochemistry of paraffin-embedded Human tonsil using NAP1L1 Polyclonal Antibody at dilution of 1:70