



Datasheet for ABIN7235374

## anti-NCK1 antibody

3 Images



[Go to Product page](#)

### Overview

Quantity:	200 µL
Target:	NCK1
Reactivity:	Human, Mouse
Host:	Rabbit
Clonality:	Polyclonal
Conjugate:	This NCK1 antibody is un-conjugated
Application:	Western Blotting (WB), Immunohistochemistry (IHC), ELISA

### Product Details

Immunogen:	Recombinant protein of human NCK1
Isotype:	IgG
Characteristics:	Polyclonal Antibody
Purification:	Affinity purification

### Target Details

Target:	NCK1
Alternative Name:	NCK1 ( <a href="#">NCK1 Products</a> )
Background:	The protein encoded by this gene is one of the signaling and transforming proteins containing Src homology 2 and 3 (SH2 and SH3) domains. It is located in the cytoplasm and is an adaptor protein involved in transducing signals from receptor tyrosine kinases to downstream signal recipients such as RAS. Alternatively spliced transcript variants encoding different isoforms

## Target Details

have been found.

Molecular Weight: 43 kDa

UniProt: [P16333](#)

Pathways: [TCR Signaling, Regulation of Actin Filament Polymerization, Signaling Events mediated by VEGFR1 and VEGFR2, VEGFR1 Specific Signals](#)

## Application Details

Application Notes: WB 1:200-1:1000, IHC 1:50-1:200

Restrictions: For Research Use only

## Handling

Format: Liquid

Concentration: 0.3 mg/mL

Buffer: PBS with 0.05 % sodium azide and 50 % glycerol, PH7.4

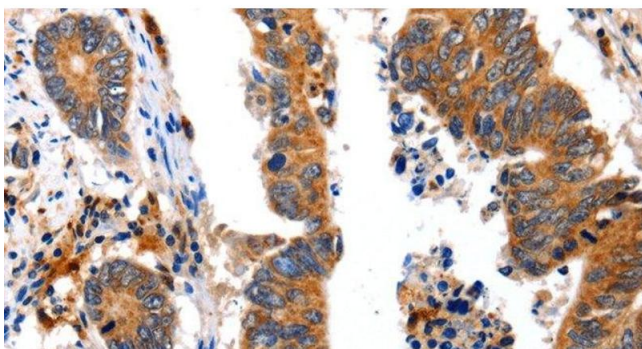
Preservative: Sodium azide

Precaution of Use: This product contains Sodium azide: a POISONOUS AND HAZARDOUS SUBSTANCE which should be handled by trained staff only.

Storage: -20 °C

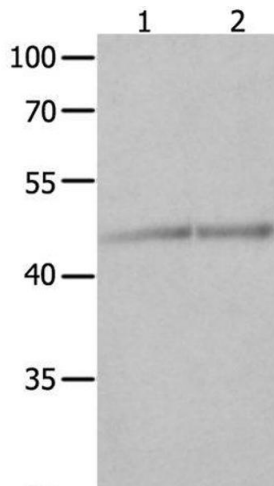
Storage Comment: Store at -20°C. Avoid freeze / thaw cycles.

## Images



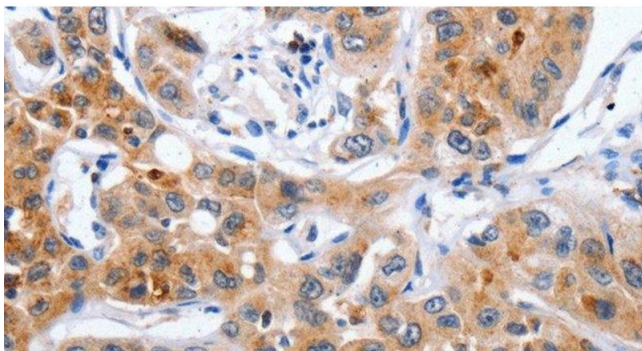
### Immunohistochemistry (Paraffin-embedded Sections)

**Image 1.** Immunohistochemistry of paraffin-embedded Human colon cancer using NCK1 Polyclonal Antibody at dilution of 1:30



### Western Blotting

**Image 2.** Western Blot analysis of Jurkat and K562 cell using NCK1 Polyclonal Antibody at dilution of 1:600



### Immunohistochemistry (Paraffin-embedded Sections)

**Image 3.** Immunohistochemistry of paraffin-embedded Human lung cancer using NCK1 Polyclonal Antibody at dilution of 1:30