

Datasheet for ABIN7235394

anti-NME3 antibody**1** Image[Go to Product page](#)

Overview

Quantity:	200 µL
Target:	NME3
Reactivity:	Human, Mouse
Host:	Rabbit
Clonality:	Polyclonal
Conjugate:	This NME3 antibody is un-conjugated
Application:	Western Blotting (WB), ELISA

Product Details

Immunogen:	Recombinant protein of human NME3
Isotype:	IgG
Characteristics:	Polyclonal Antibody
Purification:	Affinity purification

Target Details

Target:	NME3
Alternative Name:	NME3 (NME3 Products)
Background:	<p>Nucleoside diphosphate kinase 3 is an enzyme that in humans is encoded by the NME3 gene.</p> <p>Major role in the synthesis of nucleoside triphosphates other than ATP. The ATP gamma phosphate is transferred to the NDP beta phosphate via a ping-pong mechanism, using a phosphorylated active-site intermediate. Probably has a role in normal hematopoiesis by</p>

Target Details

	inhibition of granulocyte differentiation and induction of apoptosis.
Molecular Weight:	19 kDa
UniProt:	Q13232
Pathways:	Nucleotide Phosphorylation , Ribonucleoside Biosynthetic Process

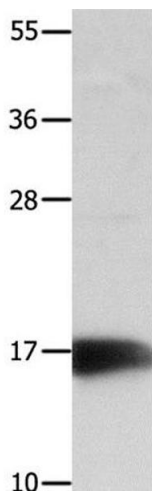
Application Details

Application Notes:	WB 1:1000-1:5000
Restrictions:	For Research Use only

Handling

Format:	Liquid
Concentration:	0.4 mg/mL
Buffer:	PBS with 0.05 % sodium azide and 50 % glycerol, PH7.4
Preservative:	Sodium azide
Precaution of Use:	This product contains Sodium azide: a POISONOUS AND HAZARDOUS SUBSTANCE which should be handled by trained staff only.
Storage:	-20 °C
Storage Comment:	Store at -20°C. Avoid freeze / thaw cycles.

Images



Western Blotting

Image 1. Western Blot analysis of Mouse kidney tissue using NME3 Polyclonal Antibody at dilution of 1:800