

Datasheet for ABIN7235435

**anti-CDH23 antibody**

3 Images

[Go to Product page](#)

## Overview

Quantity:	200 µL
Target:	CDH23
Reactivity:	Human, Mouse, Rat
Host:	Rabbit
Clonality:	Polyclonal
Conjugate:	This CDH23 antibody is un-conjugated
Application:	Western Blotting (WB), ELISA, Immunohistochemistry (IHC)

## Product Details

Immunogen:	Recombinant protein of human CDH23
Isotype:	IgG
Characteristics:	Polyclonal Antibody
Purification:	Affinity purification

## Target Details

Target:	CDH23
Alternative Name:	Otocadherin ( <a href="#">CDH23 Products</a> )
Background:	This gene is a member of the cadherin superfamily, whose genes encode calcium dependent cell-cell adhesion glycoproteins. The encoded protein is thought to be involved in stereocilia organization and hair bundle formation. The gene is located in a region containing the human deafness loci DFNB12 and USH1D. Usher syndrome 1D and nonsyndromic autosomal

## Target Details

recessive deafness DFNB12 are caused by allelic mutations of this cadherin-like gene.  
Alternative splice variants encoding different isoforms have been described.

Molecular Weight: 45 kDa

UniProt: [Q9H251](#)

Pathways: [Sensory Perception of Sound](#)

## Application Details

Application Notes: WB 1:500-1:2000, IHC 1:100-1:300

Restrictions: For Research Use only

## Handling

Format: Liquid

Concentration: 0.4 mg/mL

Buffer: PBS with 0.05 % sodium azide and 50 % glycerol, PH7.4

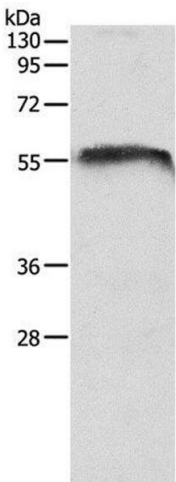
Preservative: Sodium azide

Precaution of Use: This product contains Sodium azide: a POISONOUS AND HAZARDOUS SUBSTANCE which should be handled by trained staff only.

Storage: -20 °C

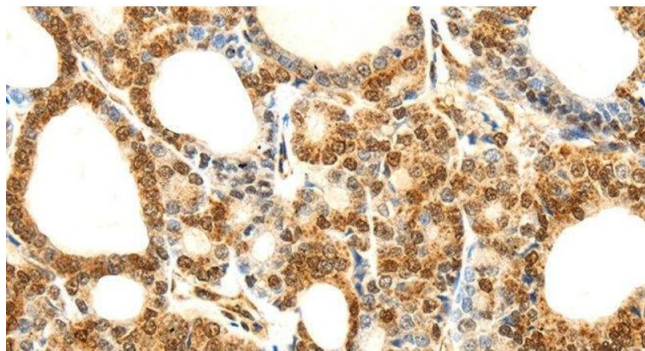
Storage Comment: Store at -20°C. Avoid freeze / thaw cycles.

## Images



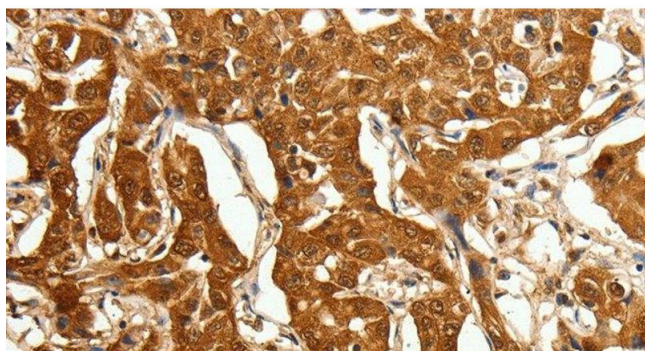
### Western Blotting

**Image 1.** Western Blot analysis of Mouse brain tissue using Otocadherin Polyclonal Antibody at dilution of 1:1050



#### Immunohistochemistry (Paraffin-embedded Sections)

**Image 2.** Immunohistochemistry of paraffin-embedded Human thyroid cancer using Otocadherin Polyclonal Antibody at dilution of 1:80



#### Immunohistochemistry (Paraffin-embedded Sections)

**Image 3.** Immunohistochemistry of paraffin-embedded Human lung cancer using Otocadherin Polyclonal Antibody at dilution of 1:80