

Datasheet for ABIN7235455

**anti-PPP1CB antibody**

3 Images

[Go to Product page](#)

## Overview

|              |  |
|--------------|--|
| Quantity:    | 200 µL   |
| Target:      | PPP1CB   |
| Reactivity:  | Human, Mouse, Rat  |
| Host:        | Rabbit   |
| Clonality:   | Polyclonal   |
| Conjugate:   | This PPP1CB antibody is un-conjugated                    |
| Application: | Western Blotting (WB), ELISA, Immunohistochemistry (IHC) |

## Product Details

|                  |                                     |
|------------------|-------------------------------------|
| Immunogen:       | Recombinant protein of human PPP1CB |
| Isotype:         | IgG                                 |
| Characteristics: | Polyclonal Antibody                 |
| Purification:    | Affinity purification               |

## Target Details

|                   |  |
|-------------------|--|
| Target:           | PPP1CB   |
| Alternative Name: | PPP1CB ( <a href="#">PPP1CB Products</a> )   |
| Background:       | The protein encoded by this gene is one of the three catalytic subunits of protein phosphatase 1 (PP1). PP1 is a serine/threonine specific protein phosphatase known to be involved in the regulation of a variety of cellular processes, such as cell division, glycogen metabolism, muscle contractility, protein synthesis, and HIV-1 viral transcription. Mouse studies suggest that PP1 |

## Target Details

functions as a suppressor of learning and memory. Two alternatively spliced transcript variants encoding distinct isoforms have been observed.

Molecular Weight: 37 kDa

UniProt: [P62140](#)

Pathways: [M Phase](#), [Cellular Glucan Metabolic Process](#), [Regulation of Carbohydrate Metabolic Process](#), [Lipid Metabolism](#)

## Application Details

Application Notes: WB 1:500-1:2000, IHC 1:25-1:100

Restrictions: For Research Use only

## Handling

Format: Liquid

Concentration: 0.3 mg/mL

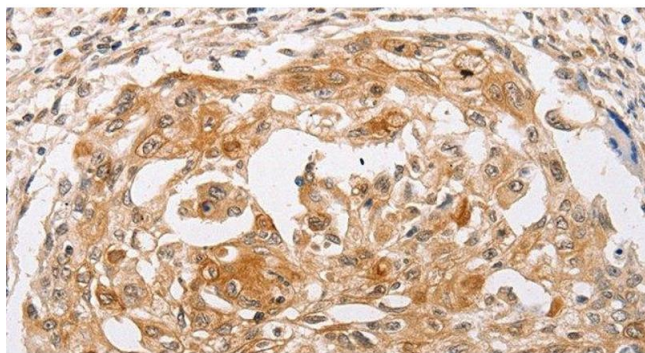
Buffer: PBS with 0.05 % sodium azide and 50 % glycerol, PH7.4

Preservative: Sodium azide

Precaution of Use: This product contains Sodium azide: a POISONOUS AND HAZARDOUS SUBSTANCE which should be handled by trained staff only.

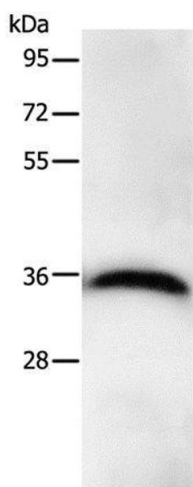
Storage: -20 °C

Storage Comment: Store at -20°C. Avoid freeze / thaw cycles.



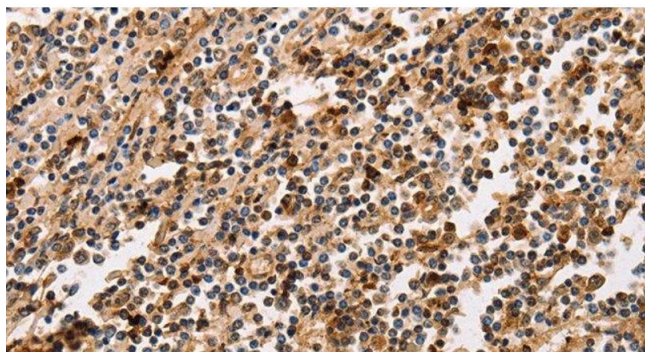
#### Immunohistochemistry (Paraffin-embedded Sections)

**Image 1.** Immunohistochemistry of paraffin-embedded Human cervical cancer using PPP1CB Polyclonal Antibody at dilution of 1:30



#### Western Blotting

**Image 2.** Western Blot analysis of Hela cell using PPP1CB Polyclonal Antibody at dilution of 1:450



#### Immunohistochemistry (Paraffin-embedded Sections)

**Image 3.** Immunohistochemistry of paraffin-embedded Human tonsil using PPP1CB Polyclonal Antibody at dilution of 1:30