

Datasheet for ABIN7235459

**anti-PEBP1 antibody**

3 Images

[Go to Product page](#)

## Overview

Quantity:	200 µL
Target:	PEBP1
Reactivity:	Human, Mouse, Rat
Host:	Rabbit
Clonality:	Polyclonal
Conjugate:	This PEBP1 antibody is un-conjugated
Application:	Western Blotting (WB), ELISA, Immunohistochemistry (IHC)

## Product Details

Immunogen:	Recombinant protein of human PEBP1
Isotype:	IgG
Characteristics:	Polyclonal Antibody
Purification:	Affinity purification

## Target Details

Target:	PEBP1
Alternative Name:	PEBP1 ( <a href="#">PEBP1 Products</a> )
Background:	Phosphatidylethanolamine-binding protein 1 is a protein that in humans is encoded by the PEBP1 gene. Binds ATP, opioids and phosphatidylethanolamine. Has lower affinity for phosphatidylinositol and phosphatidylcholine. Serine protease inhibitor which inhibits thrombin, neuropsin and chymotrypsin but not trypsin, tissue type plasminogen activator and elastase By

## Target Details

similarity. Inhibits the kinase activity of RAF1 by inhibiting its activation and by dissociating the RAF1/MEK complex and acting as a competitive inhibitor of MEK phosphorylation.

Molecular Weight: 21 kDa

UniProt: [P30086](#)

Pathways: [Feeding Behaviour](#)

## Application Details

Application Notes: WB 1:500-1:2000, IHC 1:50-1:200

Restrictions: For Research Use only

## Handling

Format: Liquid

Concentration: 0.3 mg/mL

Buffer: PBS with 0.05 % sodium azide and 50 % glycerol, PH7.4

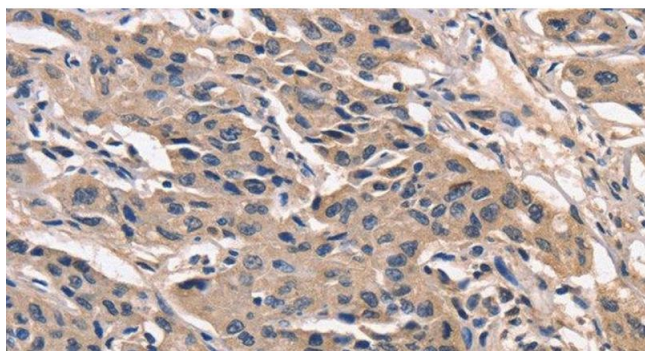
Preservative: Sodium azide

Precaution of Use: This product contains Sodium azide: a POISONOUS AND HAZARDOUS SUBSTANCE which should be handled by trained staff only.

Storage: -20 °C

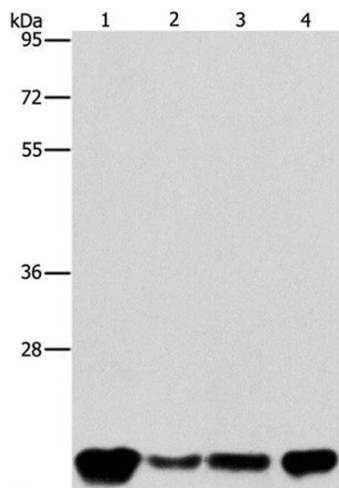
Storage Comment: Store at -20°C. Avoid freeze / thaw cycles.

## Images



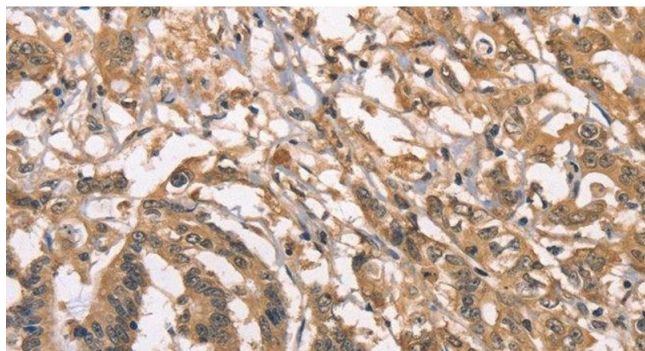
### Immunohistochemistry (Paraffin-embedded Sections)

**Image 1.** Immunohistochemistry of paraffin-embedded Human lung cancer using PEBP1 Polyclonal Antibody at dilution of 1:40



### Western Blotting

**Image 2.** Western Blot analysis of A549, K562, hela and hepG2 cell using PEBP1 Polyclonal Antibody at dilution of 1:400



### Immunohistochemistry (Paraffin-embedded Sections)

**Image 3.** Immunohistochemistry of paraffin-embedded Human colon cancer using PEBP1 Polyclonal Antibody at dilution of 1:40