

Datasheet for ABIN7235483
anti-Selectin E/CD62e antibody[Go to Product page](#)

2 Images

Overview

Quantity:	200 µL
Target:	Selectin E/CD62e (SELE)
Reactivity:	Human
Host:	Rabbit
Clonality:	Polyclonal
Application:	Immunohistochemistry (IHC), ELISA

Product Details

Immunogen:	Recombinant protein of human SELE
Isotype:	IgG
Characteristics:	Polyclonal Antibody
Purification:	Affinity purification

Target Details

Target:	Selectin E/CD62e (SELE)
Alternative Name:	E-Selectin (SELE Products)
Background:	The protein encoded by this gene is found in cytokine-stimulated endothelial cells and is thought to be responsible for the accumulation of blood leukocytes at sites of inflammation by mediating the adhesion of cells to the vascular lining. It exhibits structural features such as the presence of lectin- and EGF-like domains followed by short consensus repeat (SCR) domains that contain 6 conserved cysteine residues. These proteins are part of the selectin family of cell

Target Details

adhesion molecules. Adhesion molecules participate in the interaction between leukocytes and the endothelium and appear to be involved in the pathogenesis of atherosclerosis.

UniProt: [P16581](#)

Pathways: [Thromboxane A2 Receptor Signaling](#)

Application Details

Application Notes: IHC 1:50-1:200

Restrictions: For Research Use only

Handling

Format: Liquid

Concentration: 0.3 mg/mL

Buffer: PBS with 0.05 % sodium azide and 50 % glycerol, PH7.4

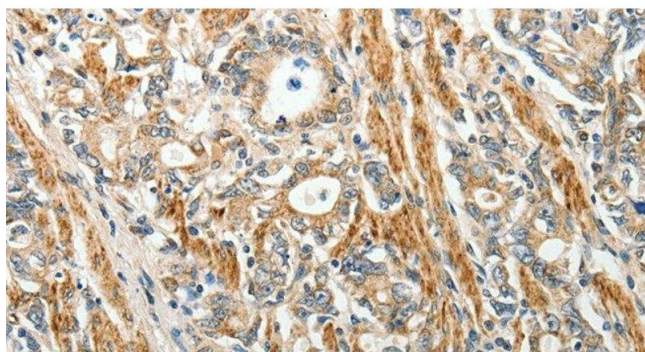
Preservative: Sodium azide

Precaution of Use: This product contains Sodium azide: a POISONOUS AND HAZARDOUS SUBSTANCE which should be handled by trained staff only.

Storage: -20 °C

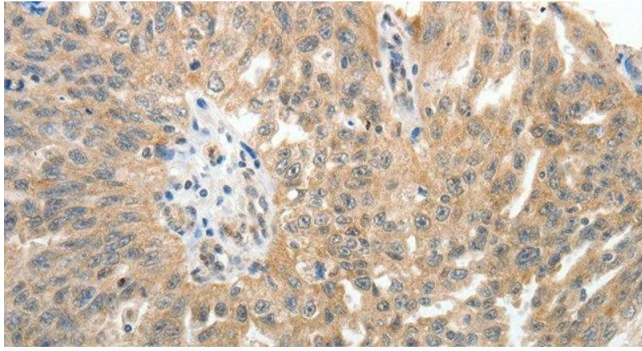
Storage Comment: Store at -20°C. Avoid freeze / thaw cycles.

Images



Immunohistochemistry (Paraffin-embedded Sections)

Image 1. Immunohistochemistry of paraffin-embedded Human gastric cancer using E-Selectin Polyclonal Antibody at dilution of 1:40



Immunohistochemistry (Paraffin-embedded Sections)

Image 2. Immunohistochemistry of paraffin-embedded Human ovarian cancer tissue using E-Selectin Polyclonal Antibody at dilution of 1:40