

Datasheet for ABIN7235520

anti-SHP1 antibody

3 Images

[Go to Product page](#)

Overview

Quantity:	200 µL
Target:	SHP1 (PTPN6)
Reactivity:	Human, Mouse, Rat
Host:	Rabbit
Clonality:	Polyclonal
Conjugate:	This SHP1 antibody is un-conjugated
Application:	Western Blotting (WB), ELISA, Immunohistochemistry (IHC)

Product Details

Immunogen:	Recombinant protein of human PTPN6
Isotype:	IgG
Characteristics:	Polyclonal Antibody
Purification:	Affinity purification

Target Details

Target:	SHP1 (PTPN6)
Alternative Name:	SH-PTP1 (PTPN6 Products)
Background:	The protein encoded by this gene is a member of the protein tyrosine phosphatase (PTP) family. PTPs are known to be signaling molecules that regulate a variety of cellular processes including cell growth, differentiation, mitotic cycle, and oncogenic transformation. N-terminal part of this PTP contains two tandem Src homolog (SH2) domains, which act as protein

Target Details

phospho-tyrosine binding domains, and mediate the interaction of this PTP with its substrates. This PTP is expressed primarily in hematopoietic cells, and functions as an important regulator of multiple signaling pathways in hematopoietic cells. This PTP has been shown to interact with, and dephosphorylate a wide spectrum of phospho-proteins involved in hematopoietic cell signaling. Multiple alternatively spliced variants of this gene, which encode distinct isoforms, have been reported.

Molecular Weight: 68 kDa

UniProt: [P29350](#)

Pathways: [JAK-STAT Signaling](#), [TCR Signaling](#), [TLR Signaling](#), [Nuclear Receptor Transcription Pathway](#), [Positive Regulation of Peptide Hormone Secretion](#), [Steroid Hormone Mediated Signaling Pathway](#), [Response to Growth Hormone Stimulus](#), [Regulation of Leukocyte Mediated Immunity](#), [CXCR4-mediated Signaling Events](#), [Signaling Events mediated by VEGFR1 and VEGFR2](#), [BCR Signaling](#)

Application Details

Application Notes: WB 1:200-1:1000, IHC 1:50-1:200

Restrictions: For Research Use only

Handling

Format: Liquid

Concentration: 0.3 mg/mL

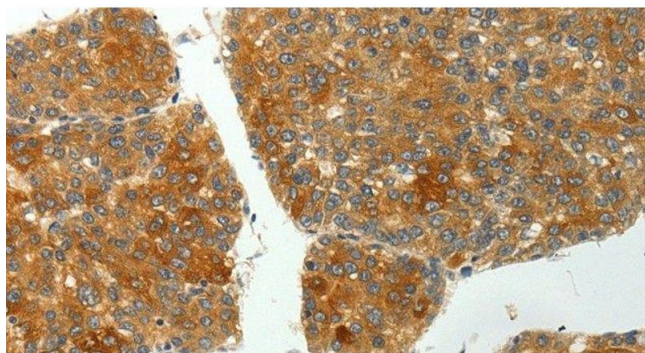
Buffer: PBS with 0.05 % sodium azide and 50 % glycerol, PH7.4

Preservative: Sodium azide

Precaution of Use: This product contains Sodium azide: a POISONOUS AND HAZARDOUS SUBSTANCE which should be handled by trained staff only.

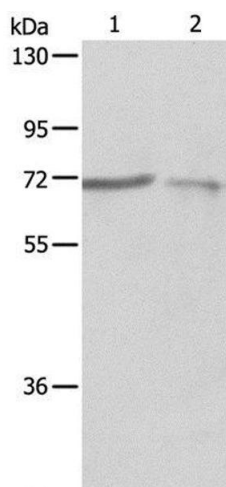
Storage: -20 °C

Storage Comment: Store at -20°C. Avoid freeze / thaw cycles.



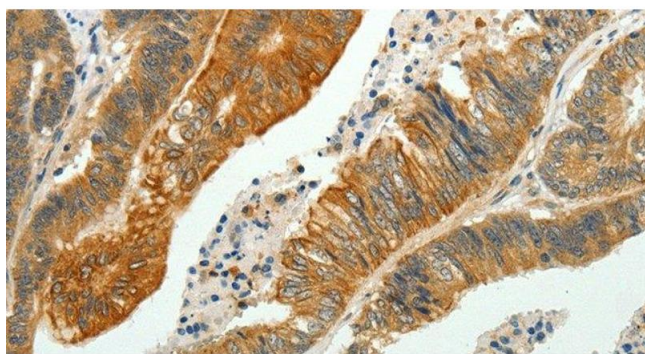
Immunohistochemistry (Paraffin-embedded Sections)

Image 1. Immunohistochemistry of paraffin-embedded Human liver cancer using SH-PTP1 Polyclonal Antibody at dilution of 1:35



Western Blotting

Image 2. Western Blot analysis of A375 and A431 cell using SH-PTP1 Polyclonal Antibody at dilution of 1:500



Immunohistochemistry (Paraffin-embedded Sections)

Image 3. Immunohistochemistry of paraffin-embedded Human colon cancer using SH-PTP1 Polyclonal Antibody at dilution of 1:35