

Datasheet for ABIN7235552

anti-SNAP25 antibody**2** Images[Go to Product page](#)

Overview

Quantity:	200 µL
Target:	SNAP25
Reactivity:	Human, Rat, Mouse
Host:	Rabbit
Clonality:	Polyclonal
Conjugate:	This SNAP25 antibody is un-conjugated
Application:	Western Blotting (WB), ELISA, Immunohistochemistry (IHC)

Product Details

Immunogen:	Recombinant protein of human SNAP25
Isotype:	IgG
Characteristics:	Polyclonal Antibody
Purification:	Affinity purification

Target Details

Target:	SNAP25
Alternative Name:	SNAP25 (SNAP25 Products)
Background:	Synaptic vesicle membrane docking and fusion is mediated by SNAREs (soluble N-ethylmaleimide-sensitive factor attachment protein receptors) located on the vesicle membrane (v-SNAREs) and the target membrane (t-SNAREs). The assembled v-SNARE/t-SNARE complex consists of a bundle of four helices, one of which is supplied by v-SNARE and

Target Details

the other three by t-SNARE. For t-SNAREs on the plasma membrane, the protein syntaxin supplies one helix and the protein encoded by this gene contributes the other two. Therefore, this gene product is a presynaptic plasma membrane protein involved in the regulation of neurotransmitter release. Two alternative transcript variants encoding different protein isoforms have been described for this gene.

Molecular Weight: 23 kDa

UniProt: [P60880](#)

Pathways: [Positive Regulation of Peptide Hormone Secretion](#), [Hormone Transport](#), [Synaptic Vesicle Exocytosis](#), [Dicarboxylic Acid Transport](#)

Application Details

Application Notes: WB 1:500-1:2000 IHC 1:50-200

Restrictions: For Research Use only

Handling

Format: Liquid

Concentration: 0.2 mg/mL

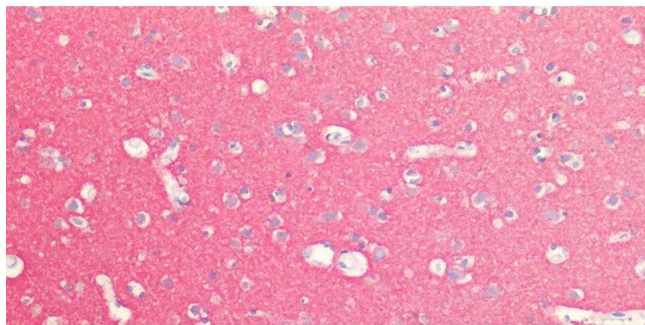
Buffer: PBS with 0.05 % sodium azide and 50 % glycerol, PH7.4

Preservative: Sodium azide

Precaution of Use: This product contains Sodium azide: a POISONOUS AND HAZARDOUS SUBSTANCE which should be handled by trained staff only.

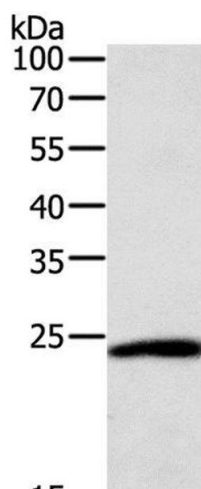
Storage: -20 °C

Storage Comment: Store at -20°C. Avoid freeze / thaw cycles.



Immunohistochemistry (Paraffin-embedded Sections)

Image 1. Immunohistochemistry of paraffin-embedded Human Brain using SNAP25 Polyclonal Antibody at dilution of 1:100.



Western Blotting

Image 2. Western Blot analysis of Hela cell using SNAP25 Polyclonal Antibody at dilution of 1:400