



Datasheet for ABIN7235568  
**anti-SFTPD antibody**



[Go to Product page](#)

2 Images

Overview

|              |                                      |
|--------------|--------------------------------------|
| Quantity:    | 200 µL                               |
| Target:      | SFTPD                                |
| Reactivity:  | Human                                |
| Host:        | Rabbit                               |
| Clonality:   | Polyclonal                           |
| Conjugate:   | This SFTPD antibody is un-conjugated |
| Application: | Immunohistochemistry (IHC), ELISA    |

Product Details

|                  |                                    |
|------------------|------------------------------------|
| Immunogen:       | Recombinant protein of human SFTPD |
| Isotype:         | IgG                                |
| Characteristics: | Polyclonal Antibody                |
| Purification:    | Affinity purification              |

Target Details

|                   |   |
|-------------------|---|
| Target:           | SFTPD   |
| Alternative Name: | SFTPD ( <a href="#">SFTPD Products</a> )  |
| Background:       | Surfactant, pulmonary-associated protein D, also known as SFTPD or SP-D, is a protein which in humans is encoded by the SFTPD gene. SFTPD is an innate immune system collectin. Surfactant protein D has been shown to interact with DMBT1. Contributes to the lung's defense against inhaled microorganisms. May participate in the extracellular reorganization or turnover |

## Target Details

of pulmonary surfactant. Binds strongly maltose residues and to a lesser extent other alpha-glucosyl moieties.

UniProt: [P35247](#)

## Application Details

Application Notes: IHC 1:25-1:100

Restrictions: For Research Use only

## Handling

Format: Liquid

Concentration: 0.3 mg/mL

Buffer: PBS with 0.05 % sodium azide and 50 % glycerol, PH7.4

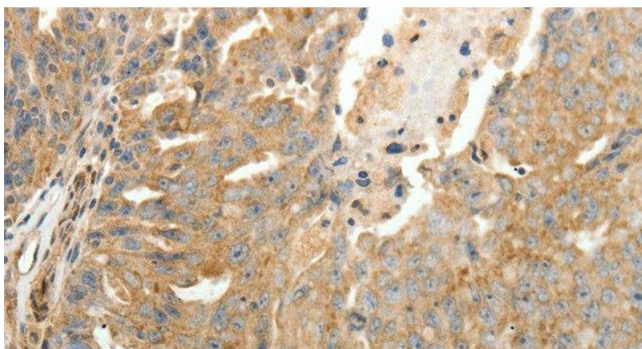
Preservative: Sodium azide

Precaution of Use: This product contains Sodium azide: a POISONOUS AND HAZARDOUS SUBSTANCE which should be handled by trained staff only.

Storage: -20 °C

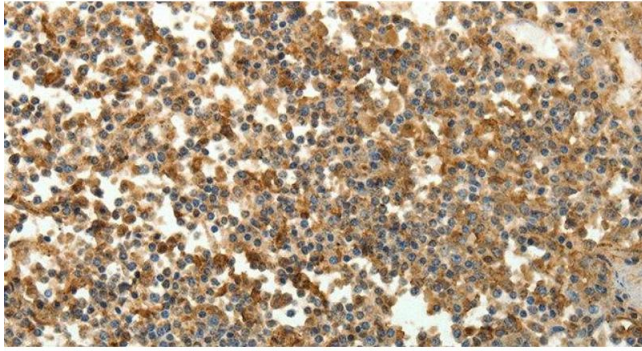
Storage Comment: Store at -20°C. Avoid freeze / thaw cycles.

## Images



### Immunohistochemistry (Paraffin-embedded Sections)

**Image 1.** Immunohistochemistry of paraffin-embedded Human ovarian cancer tissue using SFTPD Polyclonal Antibody at dilution 1:30



### Immunohistochemistry (Paraffin-embedded Sections)

**Image 2.** Immunohistochemistry of paraffin-embedded Human tonsil tissue using SFTPD Polyclonal Antibody at dilution 1:30