



Datasheet for ABIN7235686  
**anti-SERPINA5 antibody**



[Go to Product page](#)

1 Image

Overview

Quantity:	200 µL
Target:	SERPINA5
Reactivity:	Human
Host:	Rabbit
Clonality:	Polyclonal
Conjugate:	This SERPINA5 antibody is un-conjugated
Application:	Western Blotting (WB), ELISA

Product Details

Immunogen:	Recombinant protein of human SERPINA5
Isotype:	IgG
Characteristics:	Polyclonal Antibody
Purification:	Affinity purification

Target Details

Target:	SERPINA5
Alternative Name:	SERPINA5 ( <a href="#">SERPINA5 Products</a> )
Background:	The protein encoded by this gene is a member of the serpin family of proteins, a group of proteins that inhibit serine proteases. This gene is one in a cluster of serpin genes located on the q arm of chromosome 14. This family member is a glycoprotein that can inhibit several serine proteases, including protein C and various plasminogen activators and kallikreins, and it

## Target Details

thus plays diverse roles in hemostasis and thrombosis in multiple organs.

Molecular Weight: 46 kDa

UniProt: [P05154](#)

## Application Details

Application Notes: WB 1:500-1:2000

Restrictions: For Research Use only

## Handling

Format: Liquid

Concentration: 0.3 mg/mL

Buffer: PBS with 0.05 % sodium azide and 50 % glycerol, PH7.4

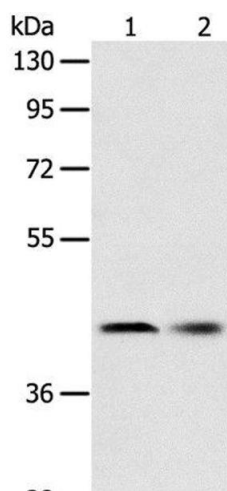
Preservative: Sodium azide

Precaution of Use: This product contains Sodium azide: a POISONOUS AND HAZARDOUS SUBSTANCE which should be handled by trained staff only.

Storage: -20 °C

Storage Comment: Store at -20°C. Avoid freeze / thaw cycles.

## Images



### Western Blotting

**Image 1.** Western Blot analysis of Human fetal liver tissue and Hela cell using SERPINA5 Polyclonal Antibody at dilution of 1:700