

Datasheet for ABIN7235734

anti-CAPG antibody**3** Images[Go to Product page](#)

Overview

Quantity:	200 µL
Target:	CAPG
Reactivity:	Human, Mouse, Rat
Host:	Rabbit
Clonality:	Polyclonal
Conjugate:	This CAPG antibody is un-conjugated
Application:	Western Blotting (WB), ELISA, Immunohistochemistry (IHC)

Product Details

Immunogen:	Recombinant protein of human CAPG
Isotype:	IgG
Characteristics:	Polyclonal Antibody
Purification:	Affinity purification

Target Details

Target:	CAPG
Alternative Name:	CAPG (CAPG Products)
Background:	This gene encodes a member of the gelsolin/villin family of actin-regulatory proteins. The encoded protein reversibly blocks the barbed ends of F-actin filaments in a Ca ²⁺ and phosphoinositide-regulated manner, but does not sever preformed actin filaments. By capping the barbed ends of actin filaments, the encoded protein contributes to the control of actin-

Target Details

based motility in non-muscle cells. Alternatively spliced transcript variants have been observed for this gene.

Molecular Weight: 38 kDa

UniProt: [P40121](#)

Pathways: [Regulation of Actin Filament Polymerization](#)

Application Details

Application Notes: WB 1:1000-1:5000, IHC 1:50-1:200

Restrictions: For Research Use only

Handling

Format: Liquid

Concentration: 0.4 mg/mL

Buffer: PBS with 0.05 % sodium azide and 50 % glycerol, PH7.4

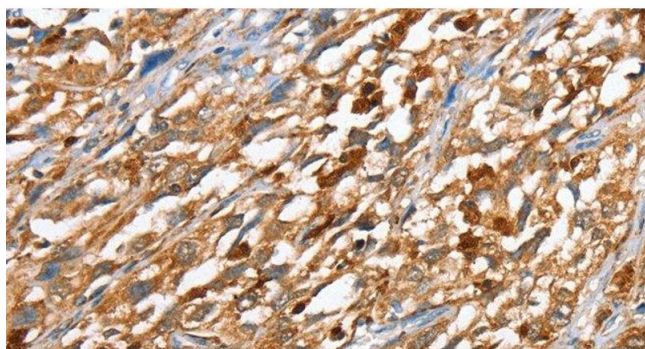
Preservative: Sodium azide

Precaution of Use: This product contains Sodium azide: a POISONOUS AND HAZARDOUS SUBSTANCE which should be handled by trained staff only.

Storage: -20 °C

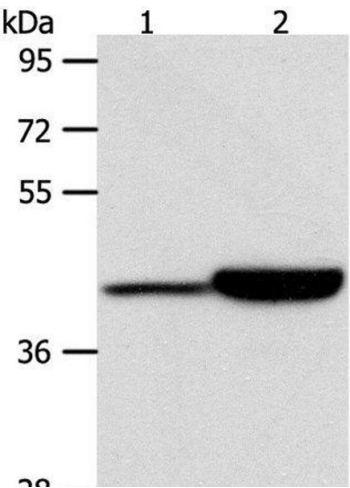
Storage Comment: Store at -20°C. Avoid freeze / thaw cycles.

Images



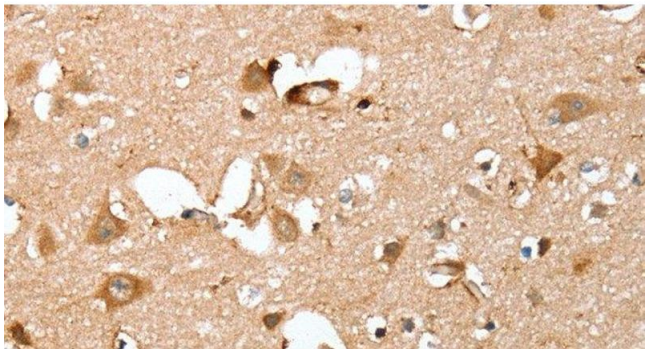
Immunohistochemistry (Paraffin-embedded Sections)

Image 1. Immunohistochemistry of paraffin-embedded Human esophagus cancer using CAPG Polyclonal Antibody at dilution of 1:40



Western Blotting

Image 2. Western Blot analysis of Jurkat and RAW264.7 cell using CAPG Polyclonal Antibody at dilution of 1:950



Immunohistochemistry (Paraffin-embedded Sections)

Image 3. Immunohistochemistry of paraffin-embedded Human brain using CAPG Polyclonal Antibody at dilution of 1:40