

Datasheet for ABIN7235755

**anti-AGFG1 antibody****2** Images[Go to Product page](#)

## Overview

Quantity:	200 µL
Target:	AGFG1 (HRB)
Reactivity:	Human, Mouse, Rat
Host:	Rabbit
Clonality:	Polyclonal
Application:	Western Blotting (WB), ELISA, Immunohistochemistry (IHC)

## Product Details

Immunogen:	Recombinant protein of human AGFG1
Isotype:	IgG
Characteristics:	Polyclonal Antibody
Purification:	Affinity purification

## Target Details

Target:	AGFG1 (HRB)
Alternative Name:	AGFG1 ( <a href="#">HRB Products</a> )
Background:	The protein encoded by this gene is related to nucleoporins, a class of proteins that mediate nucleocytoplasmic transport. The encoded protein binds the activation domain of the human immunodeficiency virus Rev protein when Rev is assembled onto its RNA target, and is required for the nuclear export of Rev-directed RNAs. Multiple transcript variants encoding different isoforms have been found for this gene.

## Target Details

Molecular Weight:	58 kDa
UniProt:	<a href="#">P52594</a>

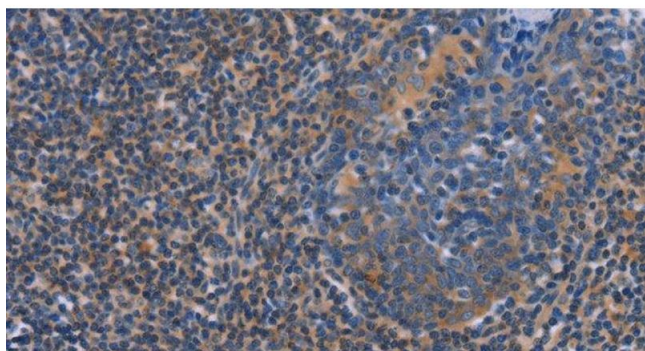
## Application Details

Application Notes:	WB 1:500-1:2000, IHC 1:50-1:200
Restrictions:	For Research Use only

## Handling

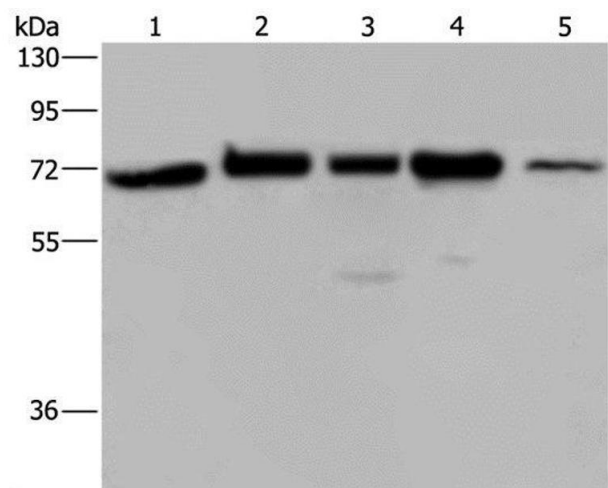
Format:	Liquid
Concentration:	0.3 mg/mL
Buffer:	PBS with 0.05 % sodium azide and 50 % glycerol, PH7.4
Preservative:	Sodium azide
Precaution of Use:	This product contains Sodium azide: a POISONOUS AND HAZARDOUS SUBSTANCE which should be handled by trained staff only.
Storage:	-20 °C
Storage Comment:	Store at -20°C. Avoid freeze / thaw cycles.

## Images



### Immunohistochemistry (Paraffin-embedded Sections)

**Image 1.** Immunohistochemistry of paraffin-embedded Human tonsil using AGFG1 Polyclonal Antibody at dilution of 1:60



Western Blotting

**Image 2.** Western Blot analysis of A172, Hela and 293T cell, K562 cell and Human testis tissue using AGFG1 Polyclonal Antibody at dilution of 1:727