

Datasheet for ABIN7235779

anti-ALDH4A1 antibody**3** Images[Go to Product page](#)

Overview

Quantity:	200 µL
Target:	ALDH4A1
Reactivity:	Human, Mouse, Rat
Host:	Rabbit
Clonality:	Polyclonal
Conjugate:	This ALDH4A1 antibody is un-conjugated
Application:	Western Blotting (WB), Immunohistochemistry (IHC), ELISA

Product Details

Immunogen:	Recombinant protein of human ALDH4A1
Isotype:	IgG
Characteristics:	Polyclonal Antibody
Purification:	Affinity purification

Target Details

Target:	ALDH4A1
Alternative Name:	ALDH4A1 (ALDH4A1 Products)
Background:	This protein belongs to the aldehyde dehydrogenase family of proteins. This enzyme is a mitochondrial matrix NAD-dependent dehydrogenase which catalyzes the second step of the proline degradation pathway, converting pyrroline-5-carboxylate to glutamate. Deficiency of this enzyme is associated with type II hyperprolinemia, an autosomal recessive disorder

Target Details

characterized by accumulation of delta-1-pyrroline-5-carboxylate (P5C) and proline.
Alternatively spliced transcript variants encoding different isoforms have been identified for this gene.

Molecular Weight: 62 kDa

UniProt: [P30038](#)

Pathways: [Monocarboxylic Acid Catabolic Process](#)

Application Details

Application Notes: WB 1:500-1:2000, IHC 1:50-1:200

Restrictions: For Research Use only

Handling

Format: Liquid

Concentration: 0.3 mg/mL

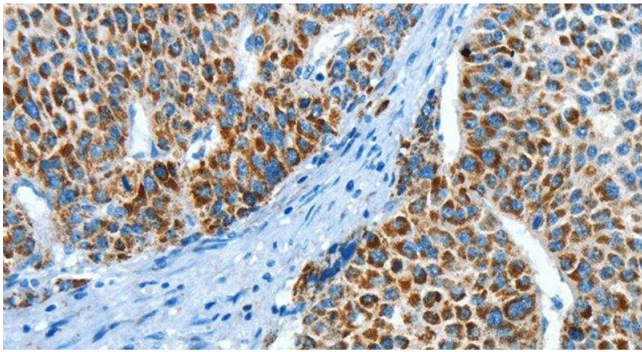
Buffer: PBS with 0.05 % sodium azide and 50 % glycerol, PH7.4

Preservative: Sodium azide

Precaution of Use: This product contains Sodium azide: a POISONOUS AND HAZARDOUS SUBSTANCE which should be handled by trained staff only.

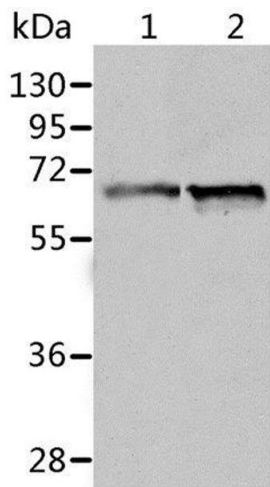
Storage: -20 °C

Storage Comment: Store at -20°C. Avoid freeze / thaw cycles.



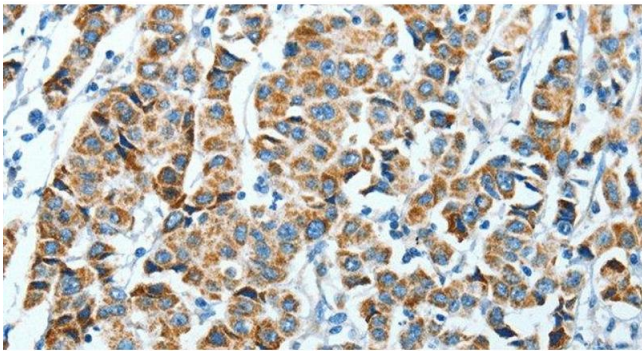
Immunohistochemistry (Paraffin-embedded Sections)

Image 1. Immunohistochemistry of paraffin-embedded Human liver cancer using ALDH4A1 Polyclonal Antibody at dilution of 1:45



Western Blotting

Image 2. Western Blot analysis of Human fetal liver and liver cancer tissue using ALDH4A1 Polyclonal Antibody at dilution of 1:450



Immunohistochemistry (Paraffin-embedded Sections)

Image 3. Immunohistochemistry of paraffin-embedded Human breast cancer using ALDH4A1 Polyclonal Antibody at dilution of 1:45