



[Go to Product page](#)

Datasheet for ABIN7235787
anti-ALDH8A1 antibody

3 Images

Overview

Quantity:	200 µL
Target:	ALDH8A1
Reactivity:	Human, Mouse
Host:	Rabbit
Clonality:	Polyclonal
Conjugate:	This ALDH8A1 antibody is un-conjugated
Application:	Western Blotting (WB), ELISA, Immunohistochemistry (IHC)

Product Details

Immunogen:	Recombinant protein of human ALDH8A1
Isotype:	IgG
Characteristics:	Polyclonal Antibody
Purification:	Affinity purification

Target Details

Target:	ALDH8A1
Alternative Name:	ALDH8A1 (ALDH8A1 Products)
Background:	This protein belongs to the aldehyde dehydrogenases family of proteins. It plays a role in a pathway of 9-cis-retinoic acid biosynthesis in vivo. This enzyme converts 9-cis-retinal into the retinoid X receptor ligand 9-cis-retinoic acid, and has approximately 40-fold higher activity with 9-cis-retinal than with all-trans-retinal. Therefore, it is the first known aldehyde dehydrogenase

Target Details

to show a preference for 9-cis-retinal relative to all-trans-retinal. Three transcript variants encoding distinct protein isoforms have been identified for this gene.

Molecular Weight: 53 kDa

UniProt: [Q9H2A2](#)

Application Details

Application Notes: WB 1:500-1:2000, IHC 1:25-1:100

Restrictions: For Research Use only

Handling

Format: Liquid

Concentration: 0.2 mg/mL

Buffer: PBS with 0.05 % sodium azide and 50 % glycerol, PH7.4

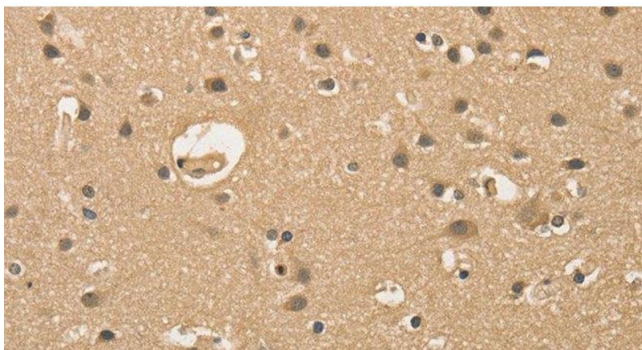
Preservative: Sodium azide

Precaution of Use: This product contains Sodium azide: a POISONOUS AND HAZARDOUS SUBSTANCE which should be handled by trained staff only.

Storage: -20 °C

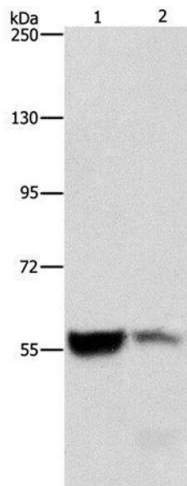
Storage Comment: Store at -20°C. Avoid freeze / thaw cycles.

Images



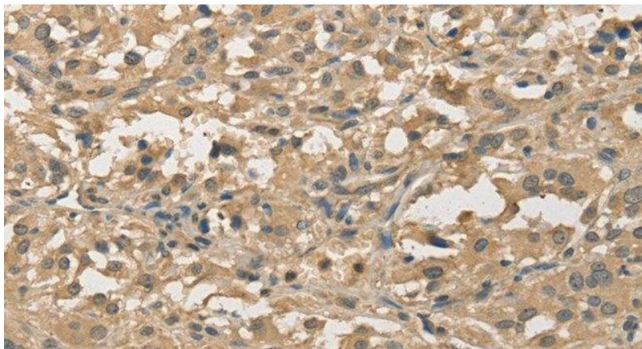
Immunohistochemistry (Paraffin-embedded Sections)

Image 1. Immunohistochemistry of paraffin-embedded Human brain using ALDH8A1 Polyclonal Antibody at dilution of 1:30



Western Blotting

Image 2. Western Blot analysis of Mouse liver and kidney tissue using ALDH8A1 Polyclonal Antibody at dilution of 1:550



Immunohistochemistry (Paraffin-embedded Sections)

Image 3. Immunohistochemistry of paraffin-embedded Human thyroid cancer using ALDH8A1 Polyclonal Antibody at dilution of 1:30