



[Go to Product page](#)

Datasheet for ABIN7235815

## anti-NIF3L1 antibody

### 2 Images

#### Overview

Quantity:	200 µL
Target:	NIF3L1
Reactivity:	Human, Mouse, Rat
Host:	Rabbit
Clonality:	Polyclonal
Conjugate:	This NIF3L1 antibody is un-conjugated
Application:	ELISA, Immunohistochemistry (IHC)

#### Product Details

Immunogen:	Recombinant protein of human NIF3L1
Isotype:	IgG
Characteristics:	Polyclonal Antibody
Purification:	Affinity purification

#### Target Details

Target:	NIF3L1
Alternative Name:	NIF3L1 ( <a href="#">NIF3L1 Products</a> )
Background:	NIF3-like protein 1 is a protein that in humans is encoded by the NIF3L1 gene. NIF3L1 has been shown to interact with COPS2. Expression analysis on cell lines revealed strong overexpression in a spermatogonia-derived cell line and a teratocarcinoma cell line. A human NIF3L1/GFP fusion protein showed localization of the protein in the cytoplasm.

## Target Details

---

UniProt: [Q9GZT8](#)

## Application Details

---

Application Notes: IHC 1:50-1:200

Restrictions: For Research Use only

## Handling

---

Format: Liquid

Concentration: 0.2 mg/mL

Buffer: PBS with 0.05 % sodium azide and 50 % glycerol, PH7.4

Preservative: Sodium azide

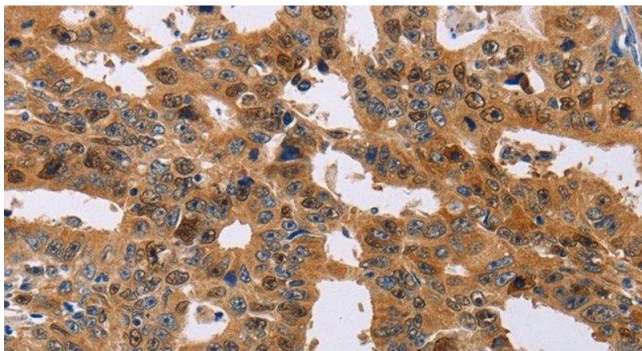
Precaution of Use: This product contains Sodium azide: a POISONOUS AND HAZARDOUS SUBSTANCE which should be handled by trained staff only.

Storage: -20 °C

Storage Comment: Store at -20°C. Avoid freeze / thaw cycles.

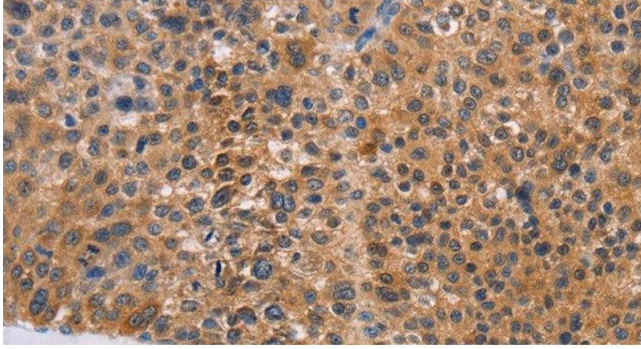
## Images

---



### Immunohistochemistry (Paraffin-embedded Sections)

**Image 1.** Immunohistochemistry of paraffin-embedded Human gastric cancer tissue using NIF3L1 Polyclonal Antibody at dilution 1:30



### Immunohistochemistry (Paraffin-embedded Sections)

**Image 2.** Immunohistochemistry of paraffin-embedded Human liver cancer tissue using NIF3L1 Polyclonal Antibody at dilution 1:30